

Analytical Advisory Assistance

**Jiu Valley Region Development
Romania**

Annex H: Livability

March 2004

Contents

I. INTRODUCTION	5
II. POPULATION RESOURCES	7
A. DEMO-ECONOMIC STRUCTURES	7
B. CHANGES IN POPULATION SIZE	10
III. MIGRATION.....	12
A. PERMANENT IN-MIGRATION INTO JIU VALLEY	12
IV. POVERTY ASSESSMENT	14
A. ECONOMIC STANDARD.....	14
V. SUBJECTIVE WELL-BEING.....	23
A. SUBJECTIVE POVERTY.....	23
B. LIFE AND PLACE SATISFACTION	24
C. MAIN PROBLEMS	26
D. CONCLUSIONS	27
APPENDIXES.....	29
H.1. HOUSEHOLDS SURVEY METHODOLOGY.....	29
H.2. POPULATION RESOURCES	31
H.3. POVERTY ASSESSMENT	37
REFERENCES.....	53

Tables

Table 2.1. Education distribution in Jiu Valley and urban areas(%)	7
Table 2.2. Demo-economic profile of the JVR population >age 14 by location	8
Table 2.3. Distribution of JVR population by occupation category and type of location	9
Table 2.4. Jiu Valley development profile in comparative terms.....	10
Table 3.1. Structure of JVR population by in-migration pattern and year (%)	12
Table 3.2. The capital profile of potential migrants/reminers.....	13
Table 4.1. Structure of the household total income	14
Table 4.2. Occupational structure of the population 15 years and above by city.....	15
Table 4.3. Poverty headcount and the number of poor in Jiu Valley by city.....	15

Table 4.4. Gini index by city	17
Table 4.5. Monthly average household income / expenditure per adult equivalent / per person by income groups (USD equivalent)	18
Table 4.6. The practice of buying on credit by income groups	19
Table 4.7. Share of households in which at least a member performed informal activities in the last 12 months by income groups and by types of informal work.....	20
Table 5.1. Competitive livability of Jiu Valley	25
Table 5.2. Deprivation as forced lack of goods/facilities in JV and the country.....	26
Table 5.3. "What do you think is the main problem to be solved into your city?" (%)	27
Table H.1.1. Statistics and parameters by settlement category.....	30
Table H.2.1. Population dynamics by Jiu Valley urban settlements: 1992-2002.....	31
Table H.2.2. Male ratio by cities*.....	32
Table H.2.3. Live-born children to 1000 women of 15+ age old by origin region of the mother.....	32
Table H.2.4. The demo-economic structure of the Jiu Valley population by cities.....	33
Table H.2.5. Employment indices by Jiu Valley urban settlements	34
Table H.2.6. Occupation category by type of settlement	35
Table H.2.7. Age structure of Jiu Valley and national-urban populations.....	35
Table H.2.8. Average values of well-being indicators by occupation categories	36
Table H.3.1. Core Indicators of Urban Poverty	39
Table H.3.2. Jiu Valley Household Survey dataset.....	40
Table H.3.3. Distribution of income by decile.....	41
Table H.3.4. Ratio of inequality against food poverty.....	41
Table H.3.5. Ratio of inequality against the first decile	41
Table H.3.6. Median income per adult equivalent by city and city specific poverty lines	41
Table H.3.7. Dimension of poverty in Jiu Valley compared to nationwide urban areas	42
Table H.3.8. Permanent out-migration from Jiu Valley 1997 – 2001 by city	42
Table H.3.9. Intention to leave the Jiu Valley by income groups.....	43
Table H.3.10. Deprived zones identified by local people by city	44
Table H.3.11. Estimation of the household income compared to needs by income groups according to the respondents 18 years and over	45
Table H.3.12. Actual standard of living compared to the one in 1989 according to the respondents 18 years and over	46

Table H.3.13. Respondents that declare that their households do not afford covering various needs by income groups.....	47
Table H.3.14. Housing conditions by income groups	48
Table H.3.15. Household with durable goods by income groups	49
Table H.3.16. Share of households in debts by creditors and by income groups	49
Table H.3.17. Public utilities by poverty groups.....	50
Table H.3.18. Public utilities and arrears by income groups	51
Table H.3.19. Shares of households by income groups and by the distance to various institutions/ services.....	52

Figures

Figure 1.1. Social components of competitiveness (adapted from Michael Porter, 2000).....	6
Figure 2.1. Component settlements of Jiu Valley urban region and their population..	8
Figure 4.1. Contribution of in kind incomes to the household total income	16
Figure 5.1. Subjective poverty lines in Romania by location.....	23
Figure H.3.1. Urban Poverty Matrix	37
Figure H.3.2. Self-identification as on a scale from 1 ('poor') to 10 ('rich') according to the respondents 18 years and over.....	46

I. INTRODUCTION¹

1.1. Livability in Jiu Valley can be described in terms of human resources, migration phenomena, income poverty, and subjective well-being of its population

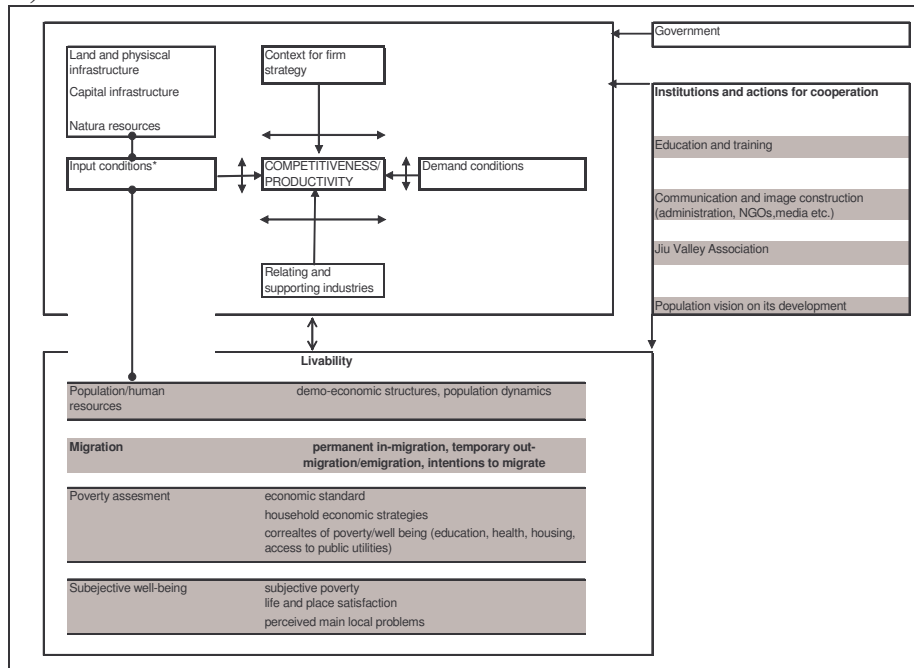
1.2. The purpose of the first chapter is to present the state of the Jiu Valley human resources by age structure, employment, and stock of human, material and network capital. All these stocks are at the same time input conditions for competitiveness and components of livability (Figure 1.1). Age, gender, and education are basic demographic structures that are strongly interconnected with employment and migration structures or behaviors. Together they constitute an integrated demo-economic whole.

1.3. The second chapter is focused on a synthetic indicator of regional livability as given by migration phenomena². The economic and social life of Jiu Valley population is mainly related to mining and migration. On long term trends, migratory movements reflected fluctuations in the key economic activity of the Valley. An increase in the number of mining jobs and in the relative levels of salary brought in-migrants into the Valley, while layoffs resulted in unemployment and eventually population decreases by out-migration. The topic of permanent and temporary migration movement in and out of the Jiu Valley is addressed into the second part of the chapter.

¹ Author: Dumitru Sandu

² The main types of migrants considered by the analysis are: temporary emigrants (people that are temporarily abroad), temporary out-migrants (people that are temporarily out of locality but in the country), work or education emigrants, lifetime in-migrants (people that are in a Jiu Valley locality but were born in another locality, irrespective of the moment they come in). Potential migrants as persons that intend to leave are also considered. Commuters out of the Valley are not analyzed as their number is very small..

Figure 1.1. Social components of competitiveness (adapted from Michael Porter, 2000)



1.4. Income poverty is considered by level and sources of livelihoods, coping strategies, and correlates (housing conditions, education and access to public facilities). The methodology utilized to measure poverty is congruent with the one used by the National Institute of Statistics and the World Bank, and based on an urban matrix.

1.5. The main data sources to define livability are the March 2002 national census, and a survey based on a sample of 1800 people in the Jiu Valley. The benchmarks include the general results of the 2002 census (whole country, urban communities of the country and cities of less than 50 thousandsand population cities as reference levels), Family Budgets Survey of the National Institute of Statistics and an Open Society Foundation survey at national level of May 2003 on a sample of 2100 adult non-institutionalized persons. Qualitative analysis based on semi-structured interviews allowed for capturing refining the interpretation.

1.6. Survey data have being used at individual level as unweighted? ones . Poverty analysis targeting representativeness at household level worked with a weighting variable computed by data referring to the Jiu Valley household and housing sizes (see subchapter on weighting into the survey methodology annex).

II. POPULATION RESOURCES³

A. Demo-economic structures

2.1. Five out of the six towns of the Valley have clear central and peripheral parts, with peripheral parts being at a lower level of development and more sparsely populated. From the administrative point of view, the Jiu Valley urban area is formed by a cluster of six towns: Petrosani and, in decreasing order of size, Lupeni, Vulcan, Petrila, Uricani and Aninoasa. For almost all towns one can distinguish central and peripheral areas (except Lupeni). Lots of former waves of in-migrants are still identified within central areas as “(human) colonies”.

- Peripheral areas are formed by 13 settlements (Figure 2.1). They are predominantly inhabited by a population of traditional farmers called “momarlani”. Seven of these peripheral settlements are very small, with about 300 inhabitants. During the last ten years, they generally suffered a sharp decline of population
- The demo-economic profile of central and peripheral locations is quite different. The population in central areas is younger and better educated, with a high %age of in-migrants. Collective housing in blocks of flats is specific of central urban areas, while individual housing is characteristic of villages. The relative number of pensioners is considerably higher in peripheral than in central locations. The relative size of households is higher in peripheral locations compared to central ones, in line with its predominant rural characteristics.

2.2. Educational attainment is lower in the Jiu Valley as compared to overall urban areas, but slightly better than in cities of comparable size (Table 2.1). This can be explained with the fact that 41% of the Valley inhabitants are in-migrants, and incomers tend to have higher education than the non-migrants from origin localities.

Table 2.1. Education distribution in Jiu Valley and urban areas(%)

Highest level of graduated school	Jiu Valley			Estimate for cities with 50000 inhab	Total national urban		
	Women	Men	Total		Women	Men	Total
Illiterate/no school	3.0	1.5	2.3	6.9	3.5	2.7	3.1
Primary	13.7	10.6	12.2	15.1	14.7	12.3	13.5
Middle	35.3	28.8	32.1	26.3	24.5	19.2	22.0
Vocational	11.8	25.3	18.4	16.8	10.6	21.2	15.6
High school	28.0	21.9	25.0	24.6	32.2	26.6	29.5
Post high school	2.1	4.0	3.1	4.2	4.0	5.0	4.5
University	5.9	7.9	6.9	6.2	10.6	13.0	11.8
Total	100	100	100	100	100	100	100

Data sources: NIS: March 18,2002 census data. Jiu Valley and total urban area are census data.

³ Author: Dumitru Sandu

Figure 2.1 Component settlements of Jiu Valley urban region and their population

Town	Central settlements, their population and their component areas	Peripheral settlements with specified population
Petrosani 45246	Petrosani 44456 Aeroport 1,2,3 (with Serparie as very poor area); Colonia (Colony); Petrosani Nord; part of former Livezeni commune	Dalja Mare 265 Slatinoara 256 Dalja Mica 167 Pestera 102
Lupeni 30846	Lupeni 30846 Braia; Stefan colony; Cioara Alba colony (very poor area)	
Vulcan 30153	Vulcan 28005 Vulcan colony; Dallas (9 very poor tower blocks)	Jiu-Paroseni 1932 Dealul Babii 216
Petrila 26060	Petrila 24230 Lonea, 8 Martie, Bratianu colony, Roma colony (very poor)	Jiet 806 Cimpa 781 Rascola 176 Tirici 67
Uricani 10296	Uricani 9304 Oras Nou, Oras Vechi	Campul lui Neag 570 Valea de Brazi 422
Aninoasa 5134	Aninoasa 3140 part of former Livezeni commune	Iscroni 1994
Total 147735	139981	7754

Specified figures represent population in the households at the last census, 2002 (Data source: national Institute of Statistics INS). The peripheral settlements are social, not administrative, units that are recognized by INS statistics and local population.

Table 2.2. Demo-economic profile of the JVR population >age 14 by location

	Peripheral location	Central location	Total urban area
Men*	49	49	49
Mean age	44,36	40,43	40,64
Mean years of education	8,36	9,61	9,54
Born in other localities*	31	53	52
Active population* ¹	38,4	47,0	46,6
Employed population*	32	37	36
Employed in salaried sectors*	31	36	35
Unemployed*	7	10	10
Unassisted unemployed*	4	6	6
Pupils and students*	7	10	10
Housewives*	19	15	15
Pensioners*	30	24	24
Employed in mining sector*	14	18	18
Miners*	11	14	13
Households in individual homes**	65	10	13

		Peripheral location	Central location	Total urban area
Population > age 14	%	5,4	94,6	100
	N	6266	110298	116564
Total population		7754	139981	147735 ⁴
Total # households		2651	49297	51948
MATERIAL capital****		-0.90	0.05	0.00
HUMAN capital****		-2.59	0.13	0.00
Potential network capital****		0.69	1.25	1.22
Total capital RESOURCES****		-2.94	0.15	0.00
Persons per household***		3.03	2.84	2.84

Data sources: NIS: March 18,2002 census data

*percent out of total over 14 years old population at the level of locality type; **% of households in individual buildings out of total households into the locality type; *** compare to provisional figures for average size of the household at the 2002 census: national level 2.89, cities 2.79, communes 3.01 (Source: INSC); **** Survey data.

2.3. Occupational distribution of the population is highly specific by the size of the settlement. Qualified mining workers account for about one quarter of the Jiu Valley employment. Their maximum concentration is in small (Uricani) and very small (Aninoasa, Iscroni) towns and in very small, rural-type settlements. The capital city, Petrosani, has the highest concentration of leaders, specialists, clerks and qualified non-mining workers.

Table 2.3. Distribution of JVR population by occupation category and type of location

Occupation category*		Size category of the settlement*					Capital city	Total
		Small rural settlement	Medium rural settlements	Very small town	Small town	Medium town		
Leaders, specialists		2.0	5.3	5.9	5.7	8.5	21.4	12.5
Clerks, service workers		8.2	11.3	14.9	14.5	14.9	17.4	15.6
Qualified mining workers		37.7	25.1	33.0	34.2	32.2	16.1	26.8
Qualified non-mining workers		25.9	38.8	27.2	27.5	31.7	35.6	32.7
Non-qualified mining workers		4.6	7.9	7.0	8.2	5.4	2.5	4.7
Non-qualified non-mining workers		21.6	11.5	11.9	9.8	7.3	7.0	7.6
Total	%	100.0	100.0	100.0	100.0	100.0	100.0	100.0
	N	305	732	1532	2938	27467	16816	49790

Data sources: NIS: March 18,2002 census data

⁴ Census data used in this analysis do not include 1,109 people living in collective housing units ("institutionalized").

B. Changes in population size

2.4. Between 1992 and 2002 Jiu Valley population declined by about 22,000 units (9%), despite an in-migration of about 15,000 people over the same period. Uricani was the settlement registering the largest decline (16%), and Lupeni the smallest (4.5%).

2.5. The size variation of settlements was driven by the variation of the salaried population. The number of salaried people in the area between the 1992 and 2002 censuses decreased from 68,710 to 48,488. Hence, a decrease of 1% in the employment rate was accompanied by a decrease of 0.89% of inhabitants at settlement level.

2.6. Generally, the sharpest decline of population was recorded in the smaller settlements with the highest share of native population. The demographic decline was not as strong in urban areas with a high concentration of in-migrants.

a. *Employment-level of living paradox*

2.7. Jiu Valley is not a poor area, as compared to similar urban areas in the country, but it is highly vulnerable in terms of poverty given the high unemployment and dependency rates.

2.8. In fact, the JVR has a much higher unemployment rate than other urban areas in the country (1.7 times higher), yet comparable living standards. Education and material resources of households are comparable to other urban areas of similar size. Only network capital seems to be lower than in other similar urban areas.

2.9. Small corruption appears to be at similar levels as in cities with fewer than 50,000 inhabitants. The only areas where corrupt behavior appears to be higher are those related to business environment (credit access) and interaction with county authorities.

Table 2.4. Jiu Valley development profile in comparative terms

Development indicators	Jiu Valley	Hunedoara urban areas	Cities < 50,000 *	Country level – urban areas	Jiu Valley compared to	
					Hunedoara urban area	Country level-urban areas
Employment indicators						
General activity rate	36.7	40.5		42.9	0.91	0.86
Participation rate	52.5			58.1		0.90
Employment rate	28.7	33.1		37.4	0.87	0.77
Unemployment rate	21.8	18.36		12.8	1.19	1.70
Demographic indicators						
% population under 15 years old	21.1			15.9		1.32
% 15 -59 years old	66.5			69.2		0.96
% 60 and over years old	12.4			14.8		0.84
Population increase (100*P02/P92)-100	-9.3	-10.25		-7.72	0.91	1.20
Dependency ratio	1722	1468		1329	1.17	1.30

Development indicators	Jiu Valley	Hunedoara urban areas	Cities < 50,000 *	Country level – urban areas	Jiu Valley compared to	
					Hunedoara urban area	Country level-urban areas
(inactives to 1000 actives)						
Capital indicators**						
% primary or less education	14.5		22	16.6		0.87
% gymnasium graduation	32.1		26.3	22		1.46
% vocational and high school	43.4		41.4	45.1		0.96
% higher education	10		10.4	16.3		0.61
Index of potential connections NCp	1.22		1.40			
Index of corrupted use of connections NCc	0.20		0.17			
Index of relative deprivation	2.61		2.98			
Index of durable (rare) goods	42.9		39.6			

Data source: NIS March 18, 2002 census and Recensământul populației și al locuințelor. Rezultate generale. Populație, gospodăria, locuințe, INS, iunie 2003

2.10. As a rule, central urban nuclei are better off than peripheral locations in terms of capital stocks at personal and household. Petrosani and Lupeni unsurprisingly offers the best indicators, and Uricani and Aninoasa the worst. Employment rates are maximum for Petrosani and minimum for Uricani.

2.11. Aninoasa, the smallest town in the region with only 5,000 inhabitants, has low capital resources, very low education and human capital, high fertility for women age 15-29 years old, very low frequency of potential out- or emigrants, weak institutions, a high level of small-level corruption, and poor infrastructure. In terms of population, the town exhibits

2.12. Capital resources are also significantly differentiated by social and cultural groups:

- In terms of capital resources, miners are the most well-off, while in terms of education, network and material capital, managers and professionals are better off. The lowest income levels are among unemployed and never-employed people.
- Ethnic, cultural and residential differences are strongly associated with differentiation in the levels of capital resources: Germans have the highest level of resources and Roma the lowest one; Momarlani living in individual houses are poorer than urban in-migrants, while if living in collective buildings they have average standards of living.

III. MIGRATION⁵

A. Permanent in-migration into Jiu Valley

3.1. Over the past 10 years, the Jiu Valley population declined by about 15,000 people. The decline is related to a trend of out-migration, due to the decline of salaried employment in the mining sector of about 20,000 between 1992 and 2002.

3.2. At the same time, in-migration continued in Jiu Valley despite, so that about 14% of Jiu Valley existing in-migrants are of fairly recent date. The majority of fresh incomers were from Moldova and other counties of Transylvania undergoing a deep economic crisis.

Table 3.1. Structure of JVR population by in-migration pattern and year (%)

Year of in-migration	In-migrants	Intraregional migrants	Non-migrants (born in the same locality)	Total
up to 1977	15.5	2.6		18.1
1978-1991	14.2	2.6		16.7
1992-2003	4.0	1.5		5.5
native population			59.6	59.6
Total	33.6	6.7	59.6	100.0

Data source: Jiu Valley household survey, Jiu Valley Association, May 2003. N=5722 persons with specified migration behavior into the 1800 surveyed households.

3.3. Lifetime intraregional migrants (among localities of the Valley) account for about 7% out of the total Jiu Valley population, and represent about 17% out of the total migrants in the region. In the period after 1991, and especially after 1997, intraregional migration accelerated.

3.4. Out of the total population of the Jiu Valley of about 148 thousand inhabitants, 43% are in-migrants. As the major interest of this work is of economic nature, one will consider migration figures mainly for the segment of population that is of 15 years old and older. For this segment, the share of in-migrants is higher, of 52%.

3.5. In-migration into the Jiu Valley in the period after 1991 is, very likely, a phenomenon related mainly to marriage behavior. The migrants from that category are mainly housewives and unemployed living in blocks of flats. Irrespective of employment offer, the influx of migrants related to marriage and accompanying the active people will continue.

3.6. Notwithstanding a high rate of unemployment, thanks to fairly high unemployment subsidies the Jiu Valley population is fairly stable: only 5% of the population above age 14 years was registered as temporary migrants at the 2002 census moment, with the majority of them (300 people) working abroad.

⁵ Author: Dumitru Sandu

3.7. Migration is affected by stock of resources. The main categories of migration intentions are those of temporary emigrants and definitive out-migrants towards cities. Their capital profile is quite similar among them, but younger people are more likely to aspire to go abroad, while older people would prefer moving to other cities in Romania. Definitive migration is contemplated by people with high human, material and network capital. People expressing a desire to migrate to a village appear instead to be the poorest among all the types of migrants.

Table 3.2. The capital profile of potential migrants/remainers

Type of migration intentions	Age	HUMAN capital	MATERIAL capital	Network capital NCP	Total capital RESOURCES	Share of the category in the sample	Share of category in subsample of migrants
Definitive out-migration in a city	32.4	4.8	2.6	2.2	5.8	5.6	27.6
Definitive emigration	28.9	2.4	1.0	2.3	4.0	2.7	13.5
Temporary emigration	28.9	1.2	-2.1	1.6	0.5	5.9	29.6
Other types of temporary migration intentions (in a village, in a city)	30.8	-0.5	-1.6	2.0	0.7	2.6	12.7
Definitive out-migration in a village	42.7	-0.4	-3.7	0.9	-2.6	3.3	16.6
Potential stayers	44.2	-0.5	0.1	1.1	-0.5	79.9	
Total sample	41.8	0.0	0.0	1.2	0.0	100	100.0

Data source: Jiu Valley household survey, Jiu Valley Association, May 2003.

3.8. There appears to be a growing tendency among JVR people to use migration remittances for business purposes outside the Jiu Valley. The key reasons seem to be the low demand in the Valley and high corruption in the local business environment.

3.9. International circular migration is expected to continue and possibly help make the local business environment more friendly for small and medium size enterprises.

3.10. Increasing livability of the region involves actions to develop housing infrastructure, to increase accessibility to good public services and to promote a friendly, non-corrupt business environment.

IV. POVERTY ASSESSMENT ⁶

A. Economic standard

a. Income poverty and dependency

4.1. Based on estimates of income levels and sources, the share in households' total income of wages and agricultural products produced and consumed in the households are significantly lower in the Jiu Valley as compared to total urban areas levels. The share of social protection and in-kind benefits (cost-free or discounted services) provided by businesses, and particularly the National Company of Hard Coal, (CNH) are instead significantly higher.

Table 4.1. Structure of the household total income

	Jiu Valley (2003)	Urban National (1998)
Cash incomes	78.8%	85.3%
of which:		
• Wages, bonuses	37.2%	57.3%
• Self-employment activities, properties and sales of commodities others than agricultural products	1.30%	4.60%
• Sales of agricultural products, animals, poultry	0.4%	0.6%
• Social protection benefits	36.6%	18.8%
of which:		
○ Social insurance pensions	22.9%	14.6%
○ Unemployment and support benefit	2.0%	1.1%
○ Social transfers not work related	11.6%	3.1%
In-kind incomes	21.2%	14.7%
Value of free of charge or price discount services provided by businesses (NHC in Jiu Valley case)	17.1%	0.7%
Value of agricultural products produced and consumed in the household	4.1%	14.0%

Data source: Jiu Valley household survey (JVHS), Jiu Valley Association, May 2003. Urban national data come from NIS and UNICEF "Social Trends", Bucharest 2001.

4.2. The structure of households income is consistent with the occupational structure of the JVR population age 15 and above: significantly larger shares of inactive (particularly housewives) and unemployed people, combined with a significantly lower share of employed people. Compared with nationwide urban averages, housewives are three times as numerous and the unemployed almost twice as numerous, while workers represent one-half of total JVR employment, compared to one-quarter in other Romanian cities. Professionals, associate professionals, service workers and employers are instead overly under-represented. This makes of the Jiu Valley an area of working-class concentration.

⁶ Author: Manuela Sofia Stanculescu

Table 4.2. Occupational structure of the population 15 years and above by city

(%)	Petrosani	Lupeni	Petrila	Uricani	Vulcan	Aninoasa	Total Jiu Valley	Urban National 2001
Inactive population:	47.4	55.0	52.7	55.0	52.1	63.3	52.0	45
Pupil/students	11.3	12.3	10.6	14.7	12.1	9.5	11.7	12.7
Housewives	10.5	14.0	17.2	19.3	16.2	22.4	14.6	5.2
Pensioners	23.6	27.2	22.9	18.7	22.2	29.9	23.9	23.1
Disabled/ unable to work	2.0	1.5	2.0	2.7	1.5	1.4	1.8	4.0*
Active population:	52.6	45.0	47.3	45.0	47.9	36.7	48.0	55
ILO Unemployed	10.9	11.0	7.6	14.7	10.0	15.0	10.6	5.7
Officially employed	38.9	30.7	35.8	28.0	35.9	21.1	34.6	49.2**
Informal workers	2.8	3.2	3.9	2.0	2.1	0.7	2.8	
Total	100	100	100	100	100	100	100	100
Valid N	1307	905	698	300	844	147	4201	

Data source: Jiu Valley household survey, Jiu Valley Association, May 2003. Urban national data come from NIS "AMIGO year 2001", Bucharest 2002, page 17, authors' computation.

4.3. While overall poverty rates in the JVR are fairly low compared to nationwide urban areas, poor people in the Valeey are considerably poorer. The rate of people living at the margin of survival, barely covering food needs (the food poverty rate) is 6.31% (ranging between 2.69% in Petrila and 16.09% in Aninoasa), more than 2.65 times higher than the nationwide urban level. Severe poverty rate (people covering food-needs, but not non-food needs) is 10.38% (ranging between 6.01% in Petrila and 22.72% in Aninoasa), which is 1.92 times higher than the nationwide urban level. Excluding Petrila, the food poverty rate in JVR is between 132% (in Lupeni) and 188% (in Aninoasa) of the food poverty rates of cities of comparable size.

Table 4.3. Poverty headcount and the number of poor in Jiu Valley by city

	Poverty Headcount			Population size	Estimated number of poor		
	Food poverty	Severe poverty	Poverty				
Total Jiu Valley	6.31%	10.38%	19.43%	147735	9317	15332	28704
Petrosani	6.65%	10.62%	19.48%	45246	3009	4805	8815
Lupeni	5.25%	9.02%	21.60%	30846	1620	2783	6663
Petrila	2.69%	6.01%	14.54%	26060	702	1565	3790
Uricani	12.39%	18.68%	25.02%	10296	1275	1923	2577
Vulcan	6.13%	10.09%	17.13%	30153	1849	3044	5166
Aninoasa	16.09%	22.72%	32.10%	5134	826	1166	1648
National Urban							
5,000-9,999 inh.	8.54%	16.76%	40.12%				
10,000-49,999 inh.	3.98%	8.56%	26.90%				
Total urban areas	2.68%	5.38%	17.63%				

Data source: Jiu Valley household survey, Jiu Valley Association, May 2003. Urban national data come from Romania Poverty Assessment, WB 2002 (Draft), NIS Household Budget Survey data.

4.4. In the Jiu Valley, food poverty and severe poverty are therefore not only wide spread, but also deeper than in the other Romanian cities. The presence of high rates of extremely poor people deepens the inequality and represents a critical social problem of the area, constituting a serious threat to social cohesion.

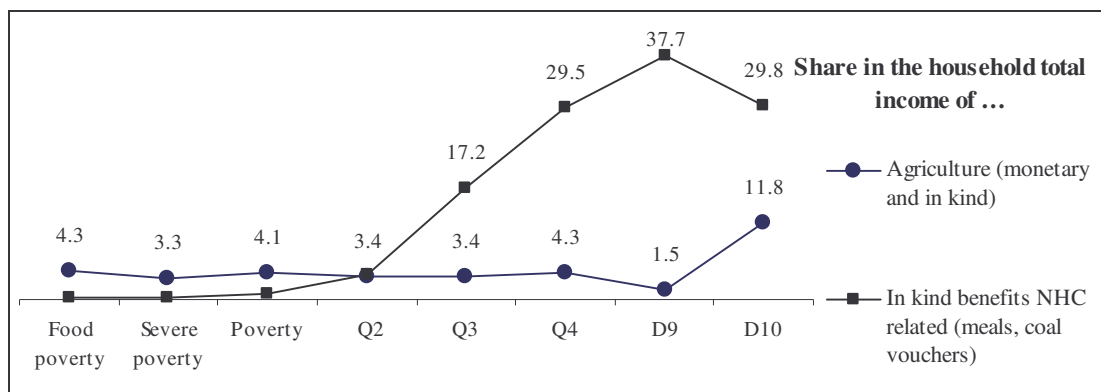
4.5. Households in food and severe poverty are in particular: (1) single-mother families, (2) large households led by poorly educated younger people (age 40 or less, often of Roma ethnicity) who have not succeeded entering labor market and have low chances of finding a formal job except through workfare programs, and (3) old widows never formally employed and depending on non-work related pensions (IOVR, social pensions, disabled pensions, successor pension).

4.6. Poverty in the Jiu Valley is highly related to unemployment, especially for poorly educated/unskilled people, and to being a female widowed or abandoned by her husband. Working poor are few, and unskilled. In 82.6% of households in food poverty have no income-earner, and the balance are one-earner families (in 11.6% cases an unskilled worker officially employed or in 5.8% cases an informal worker). In 86% of household in food poverty there are no pensioners with work-related pensions.

4.7. Income-based poverty is associated with multiple deprivations: 22% of households in food poverty cannot afford to buy bread daily and the majority cannot afford meat or fish on a weekly basis, nor housing, heating, clothes, footwear or medicines.

4.8. Additionally, the region is characterized by high income-inequality and high insecurity: on an adult-equivalent basis, the average income of households in the highest decile of the region is 18.22 times larger than the corresponding value of the households in food poverty. Welfare dependency characterizes the poor households whilst CNH dependency describes the better-off households in the region: the 7.8% of households (most in food poverty) that depend mainly on low-level social protection benefits, and the 14.3% of households (most in the highest quintile) that live exclusively from CNH wages, in kind benefits and children allowance, run the highest vulnerability, since the other households combine more sources of income in a portfolio more flexible and solid.

Figure 4.1. Contribution of in kind incomes to the household total income



Data source: Jiu Valley Household survey, Jiu Valley Association, May 2003

4.9. The high income-inequality is confirmed by the Gini index, which in Jiu Valley varies from 0.352 in Petrila city to 0.461 in Aninoasa. Overall, the Gini index of Jiu Valley (0.384) is higher than the value corresponding to nationwide cities of comparable size (10 thousand – 49,999 inhabitants). However, this comparison is only indicative because the national value is determined based on expenditures.

Table 4.4. Gini index by city

	Petrosani	Lupeni	Petrila	Uricani	Vulcan	Aninoasa	Total Jiu Valley	Urban 10 thousand – 49,999 inh.
Gini in								0.273*
Dex	0.390	0.378	0.352	0.385	0.379	0.461	0.384	0.35**
Valid N	1544	1063	870	360	1040	177	5053	

Data source: Jiu Valley household survey, Jiu Valley Association, May 2003. Urban national data come from: *Romania Poverty Assessment, WB 2002 (Draft), NIS Household Budget Survey data; **UNICEF, TransMONEE Database, 2003: 94, Table 10.11.

4.10. Subjective poverty is consistent with the objective one, and the consensual survival line is fairly close to the food poverty line (the former represents more than 90% of the latter). The subjective line highlights the strong influence of CNH wages over community expectations. Poor as well as the better off people refer to CNH employment as the ideal situation, the only one that could bring income enough for a decent life. This brings high level of frustration in the area. In the larger and more developed cities (such as Petrosani and Vulcan) people's expectations (and frustrations) are significantly higher than in smaller and poorer ones (such as Aninoasa and Uricani).

b. Intra-city deprived zones

4.11. As in the majority of Romanian cities, territorial concentration of poverty is a feature of poverty in the Jiu Valley. Zones with concentrated poverty consist of blocks of flats or houses in very poor shape located either at the city periphery or the historical center. The high overlap between poverty and welfare dependency has as effect a good knowledge of the local authorities regarding the poor people's location, particularly of those in food poverty.

4.12. These intra-city zones are also deprived regarding their endowment with urban public services and facilities. In the Jiu Valley Household Survey people were asked the main problems of their neighborhood. Irrespective of the area they belong to, the most frequently mentioned problems were dirt, waste, poor quality of roads (particularly in the colonies), lack of gas provisioning and of green spaces. Residents of deprived zones also more frequently mentioned crime, lack of public order (insecurity), and the sewerage system, which added to their unhygienic living conditions.

4.13. Poor households have significantly poorer housing conditions than the other households resident in the Jiu Valley: overcrowded buildings in need of serious renovations, without bathrooms, showers or indoor toilets.

4.14. Besides dependency and income vulnerability, lack of housing security is also specific to the poor: between 22% and 36% of poor people in the JVR live in rented houses. Tenure insecurity is aggravated by important rent arrears. In each poverty-group about one-half of households with rented dwellings are in arrears, owing amounts corresponding to 2.6 months of income (for those in food poverty), 1.7 months (for those in severe poverty), and 1 month (for those in poverty) respectively. However, this is not necessarily linked to high risk of eviction because dwellings are state-owned and the local administration is lenient poor.

c. Coping strategies

4.15. Households in food poverty have restricted access to loan and credits due to their insolvency, have very low access to pawning and selling good due to their lack of goods, and receive institutional assistance only in insignificant proportion. Instead, in considerably larger share they work wherever they find, cut off consumption, and buy daily or weekly on credit. The most frequent practice, nevertheless, is getting help from family and friends. In contrast to the food poor, the sever poor households pawn the few goods they have, take loans from usurers, and get help from relatives in a larger extent.

Table 4.5. Monthly average household income / expenditure per adult equivalent / per person by income groups (USD equivalent)

	Total income per adult equivalent		Total income per person		Total expenditures per adult equivalent		Total expenditures per person		Valid N
	Mean	Std Deviation	Mean	Std Deviation	Mean	Std Deviation	Mean	Std Deviation	
Food poverty	18	8	16	7	26	28	25	26	101
Severe poverty	30	1	25	4	32	18	30	16	70
Poverty line	40	4	34	6	44	26	38	24	167
Q2	64	9	57	11	63	37	56	35	374
Q3	103	13	91	15	85	57	75	54	351
Q4	154	18	131	21	103	57	88	53	328
D9	204	12	169	26	133	61	109	51	175
D10	334	168	295	173	192	75	169	79	213
Total	128	110	111	101	93	70	81	64	1778

Data source: Jiu Valley household survey, Jiu Valley Association, May 2003. Notes: Rate exchange 1USD = 33483 ROL (March, 2003) <http://financiar.rol.ro/macroeconomie>.

4.16. The practice of buying on credit is rather widespread in the Jiu Valley as in other Romanian urban areas. Households in poverty systematically buy on credit in proportions considerable higher than better-off ones. Nevertheless, about one in every ten

of the wealthiest households in the region buys on credit on a regular basis. The reverse of the coin is that “customer’s protection is an empty word in the Valley”.

4.17. As borrowing money (from institutions or persons), buying on credit and postponing payments to public utilities are the most frequent coping strategies, important shares of households in each income group are in debt to these creditors. Particularly poor households, between 47% and two-thirds, cumulate debts to all these creditors (public utilities, shopkeepers, relatives, friends and usurers). Their overall arrears overcome by far their monthly income: 8 times in the case of the households in food poverty, 5.5 times for those in severe poverty, and 3.7 times for those in poverty.

Table 4.6. The practice of buying on credit by income groups

	Q1		Q2	Q3	Q4	Q5		Total Jiu Valley	
	Food poverty	Severe Poverty Line	Poverty Line			D9	D10		
How often buy on credit:									
- daily	4.0%	11.8%	3.0%	1.9%	1.2%	0.6%	0.6%	2.4%	2.0%
- weekly	21.0%	7.4%	4.8%	4.9%	1.7%	1.2%	2.9%	1.0%	3.9%
- monthly	16.0%	23.5%	20.5%	10.5%	10.1%	9.8%	6.4%	8.1%	11.4%
- only in certain periods	2.0%	2.9%	1.8%	3.5%	1.7%	4.0%	3.5%	2.9%	2.9%
- it happens but very rarely	8.0%	1.5%	6.0%	7.6%	9.5%	8.0%	11.0%	10.0%	8.3%
- never	49.0%	52.9%	63.9%	71.6%	75.7%	76.3%	75.7%	75.7%	71.4%
Valid N	100	68	166	370	346	325	173	210	1758

Data source: Jiu Valley household survey, Jiu Valley Association, May 2003. Notes: Non-response 1.7%.

4.18. The high proportion of non-poor households indebted to public utilities, particularly those with large income per person, indicate an indolent attitude towards public issues. The interviewed local institutional representatives frequently mentioned this attitude as a serious problem of the Valley, correlated to lack of civic culture, deficit of participation and a certain negligence toward the dwellings and, more generally, toward the environment.

4.19. The indolent attitude toward the monthly payments for public utilities is to a large extent result of the institutional arrangement dominant in the Jiu Valley before 1997. Most National Hard Coal Company employees have benefited of consistent subsidized or free of charge services: from dwelling rent to transportation, coal vouchers or electricity. Consequently, many of them took for granted all these until they had to pay for them on a regular basis. In conclusion, a change of the CNH granting procedure in the sense of higher discipline and individual responsibility of the employee would be an instrument of reducing the non-poverty related arrears to the public utilities.

d. Correlates of poverty

4.20. Informal work in Jiu Valley is as widespread as in other Romanian urban areas: a similar proportion of households in Jiu Valley as in the other urban areas of the country - about one in every five - performed during the 12 months previous the survey at least one informal activity. What appears specific for Jiu Valley is thus not the dimension of the informal sector but its structure. Compared to the nationwide urban areas, in the Jiu Valley agriculture in an own plot or garden is more frequent as well as unskilled activities, while the qualified manual and professional activities appear to be more rare. Thus, the value added by the informal sector to the local economy can be but small.

Table 4.7. Share of households in which at least a member performed informal activities in the last 12 months by income groups and by types of informal work

Types of informal work:	Q1		Q2	Q3	Q4	Q5		Total Jiu Valley	Urban Nationwide**	
	Food poverty	Severe poverty line	Poverty line			D9	D10			
Agriculture on own plot or garden	*	*	3.2%	9.6%	8.4%	11.5%	7.8%	16.2%	9.1%	6.5%
Day labor in agriculture for others	9.1%	*	3.6%	2.7%	3.2%	*	0.0%	*	2.7%	1.5%
Seasonal work in constructions without work contract	5.2%	*	*	1.6%	*	1.6%	*	0.0%	1.3%	
Work without contract in the wood industry	*	*	*	1.9%	*	*	0.0%	*	1.0%	3.1%
Collect and sell scrap metal	16.8%	7.6%	5.1%	2.4%	1.9%	2.2%	*	3.1%	3.5%	
Collect and sell forest fruits	11.0%	8.4%	*	4.0%	1.8%	*	*	2.6%	2.8%	
Any other unskilled or semi-skilled work by day or without work contract	16.1%	*	5.4%	5.4%	4.1%	2.6%	*	2.8%	4.5%	
Any qualified manual work performed occasionally or on the side in the absence of a work contract	12.0%	*	8.0%	3.0%	1.8%	*	*	*	3.0%	2.2%
Any professional work (tutoring, consultancy, etc.) performed occasionally or on the side in the absence of a work contract	*	0.0%	*	*	*	1.6%	*	*	1.0%	4.7%
Activity as sales or insurance agent	0.0%	0.0%	*	*	1.7%	2.0%	*	*	1.3%	1.0%
Any type of informal work	38.3%	20.6%	20.1%	19.8%	16.6%	17.8%	12.8%	21.6%	19.3%	19%
Valid N	101	70	167	374	351	328	175	213	1788	

Data source: Jiu Valley household survey, Jiu Valley Association, May 2003. Urban national data from "Household, Work and Flexibility" EU project (coord. C. Wallace), Stanculescu and Berevoescu "Romania: National Survey Report", 2002, data for 2001

4.21. As in the entire country, in the Jiu Valley the poor have limited access to subsistence agriculture. The agricultural assets of the region (land and livestock) are concentrated in the 'momarlani' (the native Jiu Valley people) ownership. The majority of 'momarlani' performs subsistence agriculture and sell only small part of their products (particularly milk and dairy products) directly to local clients. In this manner, momarlani make a decent living and run a considerably lower risk to poverty, particularly food and severe poverty, compared to the 'barabe' (in-migrants in the region).

4.22. Due to the depth and multifaceted nature of poverty in the region (particularly food and severe poverty), there are considerable poverty related health risks, namely poor and distorted nutrition accompanied by distorted non-food consumption (uncovered basic needs such as clothes, footwear, medicines or adequate heating), poor and unhygienic housing conditions, dwelling overcrowding, and concentration in deprived intra-city zones with lower access to medical services.

4.23. On the other side, there are regional-specific risks, such as: high incidence of TB (tuberculosis) and other diseases specific to mining areas (one in every ten retired persons due to diseases); high incidence of children/teenagers HIV infected, particularly in Petrosani, Vulcan, and Petrila, where NGOs operate in this respect; and high pollution of the area. As a result, the infant mortality in Jiu Valley is considerable higher than at the nationwide urban level, especially in Petrosani, Petrila, Vulcan, and Aninoasa (for the period 1997 – 2001: 22.7‰, 21.1‰, 19.4‰, and 19‰ respectively compared to 16.6‰ at the nationwide urban level).

4.24. In accordance to the segmentation of the local labor market, people with only general secondary education or no qualification run the highest poverty risk. Due to the high concentration of workers and the high level of CNH wages, the area has an unusual large share of people with only vocational education among the better off.

4.25. Only 14% of Jiu Valley households afford regular savings, with large differentials depending on income group. Thus, households in food or severe poverty that just survive from a month to another cannot save money even if they wanted to. The proportion of households that regularly save money increases to about 10% for households with incomes next to the upper poverty line (quintile 2), to 23% for those in quintile 3, to about 30% of households in quintile 4 or decile 9, and to more than 40% of the richest 10% households (in decile 10).

4.26. Besides regular savings non-poor households in proportions ranging between 10% (quintile 2) and 40% (decile 10) have access to loans from Houses for Mutual Help. Poor households have no/extremely low access to this funding sources, due to the under-representation of employed and retired people in their group.

4.27. All together, entrepreneurial orientation is rare in the Jiu Valley: only 13% of the population age 18 or above intend to open a business in the next five years and only a half of them have concrete plans in this respect. The propensity to entrepreneurship is underdeveloped as compared to the nationwide urban level. Nevertheless, the profile of the potential entrepreneur is the same in the Jiu Valley as in the rest of Romanian cities: the most interested in starting a business are mainly male, young (particularly under 25), well educated persons (high school at least), often still at school.

4.28. Regarding children participation in school, the enrollment rate does not depend on the economic standard of the household.

4.29. Noticeably, the region has considerably few cultural and leisure units as compared to other urban areas. Furthermore, the NGOs based in the Valley are concentrated in social activities (where the funding was available), while only two organizations develop cultural and leisure activities, one on an occasional basis. Thus, the poor cultural infrastructure of the region perpetuates the underdeveloped cultural capital of the population.

V. SUBJECTIVE WELL-BEING

A. Subjective poverty⁷

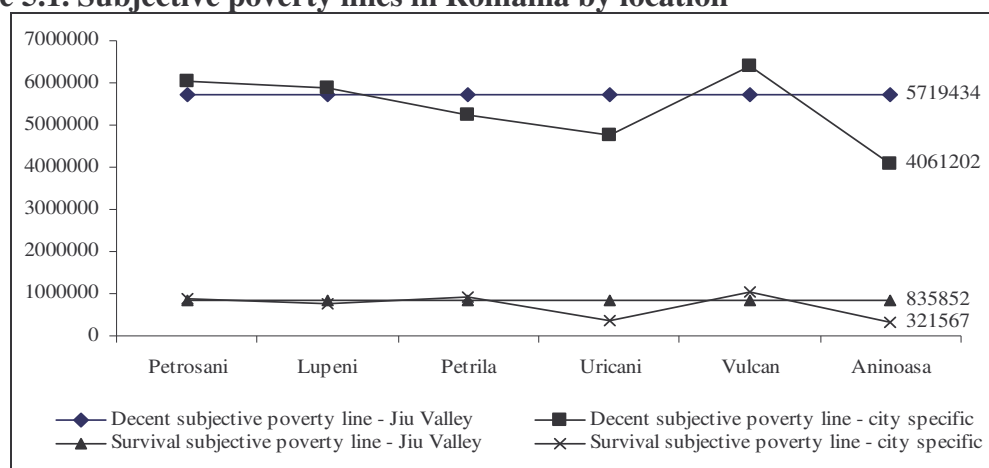
5.1. Subjective poverty is estimated by using a series of indicators. The subjective “bare survival” line in the Jiu Valley is indicated by an income lower than 824 – 835 thousand ROL (some 25 USD) per adult equivalent, per month. The consensual survival line is fairly close to the food poverty line (the former represents about 90% of the latter).

5.2. The “decent survival” line in Jiu Valley is put by the local population as a whole at an income of ROL 5.7 million (about 170 USD) per adult/per month, which for a four-member family of two adults and two children works out to about ROL 15.3 million/month -- a skilled miner’s wage that works underground.

5.3. However, for respondents from the poorest 60% of households, a decent life is actually possible with ROL 4.7 million (about 140 USD)/month, and diminishes further to ROL 3.9 million (about 116 USD)/month for respondents from the poorest 30% of households. Even in the latter case, the assessed income translates, for the same four-member family of two adults and two children, to about ROL 10.5 million/month -- four times higher than the national minimum wage, equivalent to two good wages in private firms or one CNH wage of an unskilled worker that works underground.

5.4. Hence, CNH employment shapes the expectation for a decent standard of living in all walks of life in the JVR and the poverty gap (distance between the actual income and the decent subjective line) is therefore quite high, indicating high frustration with the present standards of living. This is particularly true in the bigger and more developed cities such as Petrosani and Vulcan.

Figure 5.1. Subjective poverty lines in Romania by location



Data source: Jiu Valley household survey, Jiu Valley Association, May 2003.

⁷ Author: Manuela Sofia Stanculescu

5.5. The indicators of subjective poverty in the Jiu Valley population show significant disparities between income groups. The great majority (over two thirds) of respondents from households in poverty assess their household income as “not enough to cover basic needs”, consider that their standard of living grew worse after 1989 and more than a half identify themselves as “poor”. At the other extreme there are the respondents from households in Deciles 9 and 10, and to a lower extent those from Quintile 4: more than half of them assessed their household income as “enough for a decent life or better”, declared that their living standards have remained the same or become better since 1989 and identified themselves on a rich-to-poor scale in the middle.

5.6. All together, the subjective poverty assessment in the JVR is highly consistent with the objective one based on national poverty lines.

B. Life and place satisfaction⁸

a. Assessment by component localities

5.7. Satisfaction with the area of residence is a barometer of potential migration. The highest degree of satisfaction with the residence area is for Petrosani people and the lowest one for those in Petrila and Uricani. Infrastructure is a key factor in explaining the variation of satisfaction on the residence area. Quality of the housing seems to be the most important factor: if the person has a good perception on the quality of her/his dwelling it follows a high probability of having also a good perception of the whole residence area. Personal house and the nearby road seem to be the infrastructure factors of direct impact on the residential perception. Having a good house near a good road gives high probability of positive perception of the area having access to public services in short distances is also a significant factor for the residential satisfaction. But the livability as defined by residential satisfaction does not derive mechanically from the quality of the surrounding physical infrastructure and accessibility to public service. It is also the result of the capital structure of the household. Persons that are richer in network capital and in money tend to be more satisfied. Other purely demographic factors play also a role: women are more inclined than men to be satisfied with the residence and persons in larger families are also more positive about their area of residence. Education, ethnicity and marital status do not seem to be relevant.

5.8. Having an asphalted road close to the house is a factor that increases the probability of better perception of the area environment: 60% of the persons that live close to an asphalted road are satisfied with their ward compared to only 48% as is the case of those having dwellings close to a clay or gravel road. A variation of more that 20% points between the very dissatisfied people of Vulcan and Lupeni people living close to bad roads compared to the high satisfaction%age of people from Petrosani and Aninoasa that live close to good roads.

⁸ Author: Dumitru Sandu

b. Assessment in the national context

5.9. From the point of view of livability, the Jiu Valley is not only segmented internally, but also records lower livability compared to national standards on specific items. The dynamics of life (the way population perceives the current life compared to one year ago), and the state of personal health are lower not only compared to the population in cities of similar size, but also compared to the rural population. The only area where satisfaction is higher in the Valley, compared to the national level, is money. Other items of livability as optimism and general satisfaction with current life are approximately at the same level in Jiu Valley compared to similar urban areas in the country.

5.10. In terms of objective indicators of livelihood, the Valley is in a very particular situation. The index of material goods in the household is higher in the Valley as compared to similar size cities, while network capital has lower values. Lower network capital seems to be of high consequence for migration and entrepreneurial behavior of the population, lowering the propensity to migrate and to develop private businesses.

5.11. When comparing living conditions with cities of similar size, the variation of relative deprivation and of the index of durable goods appears to be lower in the Jiu Valley, exception made for lack of resources for heating and generally house maintenance.

Table 5.1. Competitive livability of Jiu Valley

Livability item		Jiu Valley, May 2003	National level, May 2003			
			Cities <50,000 (comparable with JV)	Cities >50,000	Communes	Total
percent persons considering that	are better off today than one year before	11.71	15.7	18.0	13.8	15.7
	will live better next year	23.32	23.1	30.8	19.7	24.5
	are satisfied with the money	25.89	19.6	25.9	17.5	21.0
	are healthy	50.83	55.4	56.4	48.7	52.8
	satisfied with their life	26.57	26.2	29.6	24.8	26.9
	mean index of media consumption	1.82	2.0	2.3	1.7	2.0
	Index of network capital NCp	1.22	1.4	1.5	0.9	1.2
Index of durable goods	42.9	39.6	53.8	20.9	36.6	

Data source: For Jiu Valley – Jiu Valley household survey, Jiu Valley Association, May 2003; for the country – Public Opinion Barometer, May, 2003.

Table 5.2. Deprivation as forced lack of goods/facilities in JV and the country

Deprivation as lack of resources as to:	Percent of people that do not have/cannot get the item due to lack of resources at the level of				
	Jiu Valley	the country			Total
		Cities < 50000	Cities >50000	Communes	
heating the house	34	25	20	26	24
get appropriate cloth for winter	26	31	21	39	31
Pay for housing maintenance	28	19	23	29	25
have a meal of meat/fish at least once in a week	19	21	13	31	22
Buy necessary drugs	28	44	31	53	44
Buy daily bread	5	7	2	17	10
Buy new cloths	51	55	48	66	57
replace used furniture	78	82	79	85	83
spend a vacation out of locality	64	80	69	83	78
Buy two solid pair of shoes	51	57	46	66	57
do regular savings	75	87	82	87	85
invite friend for dinner/lunch at least once in a month	50	57	55	63	59
have a car	54	61	48	70	60
have a color TV	13	19	6	42	24
have a refrigerator	43	52	39	69	54
have an automatic machine	38	60	44	78	62
have a mobile or standard telephone	50	64	44	80	64
Index of relative deprivation (mean)	2.61	2.98	2.27	3.83	3.09

Data source: For Jiu Valley – Jiu Valley household survey, Jiu Valley Association, May 2003; for the country – Public Opinion Barometer, May, 2003. Example of reading the data: 34% of interviewees declared that they cannot afford heating of the house, compared to 25% for the cities of less than 50 thousand inhabitants.

C. Main problems

5.12. Public concern in the Jiu Valley is dominated by finding a job (as high as 40% of total interviewees in Lupeni). The second concern is related to bad roads: (highest complaints in Aninoasa), followed by access to the public gas system (major concern in Petrila and Uricani). The fourth issue mentioned by is pollution (especially in Vulcan).

5.13. Week public institutions marked by corruption, lack of expertise, poor commitment to meeting public needs are also considered to be a serious problem in the Valley, with people in Petrosani and Vulcan among the most active in mentioning the issue.

5.14. Another topic mentioned as problematic is the lack of dwelling (in Petrila and Uricani especially), health services (Uricani) and the bad quality of the potable water (Lupeni).

Table 5.3. "What do you think is the main problem to be solved into your city?" (%)

	LUPENI	PETROSANI	PETRILA	VULCAN	URICANI	ANINOASA	Total region
Lack of jobs	40.1*	26.5	23.4	21.5	18.2	16.5	26.8
Bad roads	14.7	17.0	15.9	17.6	4.5	35.4*	16.5
Lack of gas	6.1	14.6	22.5*	10.5	20.0*	10.1	13.6
Unclean environment	9.6	13.0	11.3	14.9*	5.5	11.4	11.8
Poor institutions, mal-functioning, incompetence, corruption	2.9	9.2*	1.9	10.7*	5.5	5.1	6.5
Income, life cost	4.8	2.7	3.1	4.1	0.9	3.8	3.4
Lack of dwellings	2.1	1.4	6.9*	1.7	9.1*	1.3	3.1
Health services	1.1	1.3	0.3	2.8	14.5*		2.1
Water-bad quality or lack of	1.3*	0.2	0.3	0.8	0.9		0.6
Other	8.8	5.8	8.4	8.0	7.3	5.1	7.4
No problem	0.3	0.5	0.6	1.1	0.9	1.3	0.7
NA	8.0	7.8	5.3	6.3	12.7*	10.1	7.5
	100	100	100	100	100	100	100

Data source: Jiu Valley household survey, Jiu Valley Association, May 2003. *

D. Conclusions⁹

5.15. A tendency to social unrest in the JVR comes from the fact that the local population has enjoyed average or above-average standards of living. Hence, with social perceptions that today's life is worse than one year before, a reduced number of structured alternatives to mining, high social inequality, a culture of social protection dependency, a high degree of isolation and the memory of former social unrests are factors conducive to social unrest. Leadership and favoring events are other hard to estimate factors that can contribute to the emergence of social unrest movements.

5.16. Development in Jiu Valley means, in the perception of Jiu Valley population, to a large degree, creation of new job as to avoid unemployment. The solutions to this basic need reflect the endowment of resources. For people with low in material, education, and network resources, the mining industry is the survival solution ("the only way" to provide jobs in the Valley). For those who are better off, tourism or the attraction of foreign/Romanian investors are the real development solutions. A fringe benefit of attracting foreign investors would be reducing corruption.

⁹ Authors: Dumitru Sandu and Manuela Sofia Stanculescu

5.17. Central authorities enjoy a negative perception among local stakeholders, while local authorities and the population have the best image as contributors to the JVR development. Other stakeholders (NGOs, CNH, Miners' Union), received mixed reviews.

APPENDIXES

H.1. Households survey methodology¹⁰

Specific data have been produced for this assessment by:

- a household survey using a representative sample of 1800 adult non-institutionalized persons,
- a firm survey on a representative sample of 220 firms,
- semi-structured interviews conducted repeatedly by each member of the study team on the topic she/he was in charge with.

The data file for all the 147.735 persons, 51.948 households, 57.095 dwellings and 10.793 buildings recorded into the Valley at March 18th census were also available and processed to determine demographic, economic, social and urbanistic profiles of the localities in the region. Other key data sources for the analysis included: data from Open Society Foundation survey in May 2003, based on a national representative sample of 2.100 non-institutionalized adult persons; results of NIS referring to Family Budgets Analysis (ABF), Labor Force Analysis (AMIGO), 1992 census data, locality data basis (BDL) of NIS etc.

¹⁰ Author: Dumitru Sandu

Table H.1.1. Statistics and parameters by settlement category

	Sample data (statistics)				Population* (2002) data (parameters, census data)			
	peripheral settlements	central settlements	capital city Petrosani	total JV	peripheral settlements	central settlements	capital city Petrosani	total JV
% into the reference category of settlements out of total Jiu Valley	4.9	64.7	30.4	100	5.4	63.3	31.3	100
mean age	47.48	41.02	42.63	41.8	45.5	41.15	42.55	41.82
% over 60 years old within the settlement category	30	15	16	16	24	15	16	16
% men within the settlement category	58	49	48	49	49	49	48	49
% persons born in other locality (life time in-migrants)	32	53	58	54	32	55	58	54
persons in individual dwellings within the settlement category	57	11	16	15	69	11	11	14
1,00 gymnasium	35.2	40.7	29.8	37.1	56.3	44.2	33.4	41.5
2,00 high school	53.4	48.6	49.3	49	36.7	48.3	47.9	47.6
3,00 post high school	11.4	10.7	21	13.9	7	7.5	18.7	10.9
1,00 Romanian	94.3	87.8	87.4	88	94.8	88.9	87.7	88.9
2,00 Hungarian	3.4	9.1	9	8.8	3.2	9.4	10.1	9.3
3,00 Other	2.3	3.1	3.7	3.2	2	1.7	2.2	1.9

In order to compare sample and population data, all the figures for population are computed only for the segment of 18 and over 18 years old persons.

H.2. Population resources

Table H.2.1. Population dynamics by Jiu Valley urban settlements: 1992-2002

Town	Component settlement	population in the households		total increase	living in-migrants 1992-2002	% increase (100* P02/P92)-100	annual in-migration rate ‰
		Jan.1992 P92	March.2002 P02				
PETROSANI	Petrosani	49142	44456	-4686	5371	-9.5	11.3
	Dalja Mare	297	265	-32	2	-10.8	0.7
	Dalja Mica	197	167	-30	1	-15.2	0.5
	Pestera	123	102	-21	4	-17.1	3.5
	Slatinioara	297	256	-41	7	-13.8	2.5
		50056	45246	-4810	5385	-9.6	11.1
LUPENI	Lupeni	32296	30846	-1450	2518	-4.5	7.9
PETRILA	Petrila	27036	24230	-2806	2556	-10.4	9.8
	Cimpa	624	781	157	16	25.2	2.2
	Jiet	770	806	36	57	4.7	7.1
	Rascoala	219	176	-43	1	-19.6	0.5
	Tirici	79	67	-12	0	-15.2	0.0
		28728	26060	-2668	2630	-9.3	9.4
URICANI	Uricani	11014	9304	-1710	1506	-15.5	14.6
	Campu lui Neag	574	570	-4	73	-0.7	12.6
	Valea de Brazi	696	422	-274	15	-39.4	2.6
		12284	10296	-1988	1594	-16.2	13.9
VULCAN	Vulcan	31812	28005	-3807	2521	-12.0	8.3
	Dealul Babii	206	216	10	13	4.9	6.1
	Jiu-Paroseni	2091	1932	-159	146	-7.6	7.1
		34109	30153	-3956	2680	-11.6	8.2
ANINOASA	Aninoasa	3490	3140	-350	323	-10.0	9.6
	Iscroni	1910	1994	84	362	4.4	18.3
		5400	5134	-266	685	-4.9	12.8
Total		162873	147735	-15138	15492	-9.3	9.8

Data sources: NIS. January 7 1992 and March 18 ,2002 censuses

*Figures include only population in the households

Table H.2.2. Male ratio by cities*

Age group	PETROSANI	LUPENI	PETRILA	URICANI	VULCAN	ANINOASA	Total
0-14	994.3	1054.0	1009.3	960.1	1029.2	1050.2	1015.9
15-29	1006.9	1019.4	986.3	972.2	991.3	954.1	998.2
30-44	973.9	1054.7	1085.1	1080.1	1057.7	1074.8	1037.7
45-59	893.7	937.8	958.9	1044.8	919.6	977.3	929.0
60 and over	740.6	814.8	769.2	741.5	758.1	739.2	764.9
Total	934.1	992.0	978.7	983.4	976.1	973.1	967.2

Data sources: NIS: March 18,2002 census data.* Men to 1000 women

Table H.2.3. Live-born children to 1000 women of 15+ age old by origin region of the mother

Mother was born in	Age category of the woman at census moment				Total
	15-29	30-44	45-59	60 and over	
Same locality	399.2	1610.3	2031.6	1773.9	1153.9
Hunedoara	687.9	1691.9	1915.2	1711.4	1504.3
Banat	826.5	1858.3	1913.6	1942.9	1689.0
Other region	723.0	1934.0	2244.8	1824.6	1718.6
Oltenia	850.7	1859.3	2197.3	1913.4	1812.3
Crisana-Maramures	841.8	2023.0	2272.2	1990.7	1969.3
Transylvania	812.9	2171.4	2350.8	2188.2	2085.9
Moldova	878.6	2224.5	2733.6	2478.0	2099.1
Total	529.1	1827.6	2248.2	1980.0	1555.1

Data sources: NIS: March 18,2002 census data.

Jiu Valley population keeps to a large degree the fertility patterns of origin of the mothers. The highest fertility is recorded for women coming from Moldova, region of traditionally high fertility. The lowest level of fertility is for the women that are natives or from Hunedoara, Timis or Caras-Severin counties. The pattern is valid even for younger generations. Even if one controls for type of housing, the lowest fertility is for the natives. This is an unexpected cultural characteristic of the native population (of "momarlani") that are mainly livestock breeders.

A. *Employment by settlement*

Table H.2.4. The demo-economic structure of the Jiu Valley population by cities

City	population of 15 years old and over								population of under 15 years old		total population	mean age		
	active population				inactive population				pupils	taken care by others			%	n
	occupied		unemployed		pupils and students	pensioners	housekeepers	taken care by other						
	in salaried sectors	in non salaried sectors	not getting cash assistance	getting cash assistance										
Petrosani	31.1	1.4	3.9	3.5	8.7	20.2	8.9	4	12.3	6.1	100	45246	35.4	
Lupeni	24.8	0.5	4.8	2.4	7.6	21.2	13.3	4.6	13.9	6.9	100	30846	34.0	
Petrila	26.7	0.5	4.8	3.2	6.6	19.2	13.7	2.8	14.5	7.9	100	26060	33.5	
Uricani	23.9	0.8	6.3	4.7	7.3	15.3	14.5	1.9	16.1	9.1	100	10296	30.6	
Vulcan	29.2	0.7	6.1	2.9	7.3	17.4	12.2	2	14.5	7.6	100	30153	32.7	
Aninoasa	25	0.5	2.4	4	5.4	19.1	14.5	5.1	15.6	8.3	100	5134	33.7	
Total	27.9	0.8	4.8	3.2	7.6	19.3	11.9	3.4	13.9	7.2	100	147735	33.8	
	36.7*				63.3									

Data source: NIS March 18, 2002 census

* Compare to 44.9% for urban national level in the first trimester of 2002 (Ancheta asupra fortei de munca in gospodarii (AMIGO). Trimestrul III 2002, INS, p39). The activity rate for over 14 years old population from Jiu Valley was of 46.6% (compared to 53.3% at the urban national level, according to the same INS source).

Table H.2.5. Employment indices by Jiu Valley urban settlements

		global activity rate ¹	partici pation rate ²	total employe nt rate ³	total unemploy ment rate ⁴	rate of unemploy ment of those receiving assistanec ⁵
PETROSANI	PETROSANI	40.1	55.7	32.6	18.6	9.8
	DALJA MARE	26.4	38.9	25.7	2.9	1.4
	DALJA MICA	33.5	42.3	30.5	8.9	3.8
	PESTERA	31.4	45.7	23.5	25.0	7.7
	SLATINIOAR A	17.2	27.7	16.4	4.5	0.0
LUPENI	LUPENI	32.5	46.6	25.2	22.2	8.7
PETRILA	PETRILA	35.6	52.3	27.4	23.1	10.8
	CIMPA	29.1	44.4	23.4	19.4	6.2
	JIET	31.1	47.4	26.7	14.3	7.3
	RASCOALA	26.7	42.3	22.7	14.9	4.8
	TIRICI	34.3	46.9	31.3	8.7	8.7
URICANI	URICANI	36.1	52.6	24.7	31.8	17.0
	CAMPU LUI NEAG	34.2	51.2	26.1	23.6	10.2
	VALEA DE BRAZI	30.1	42.6	23.7	21.3	2.9
VULCAN	VULCAN	39.4	55.5	30.0	23.8	9.2
	DEALU BABII	22.2	36.9	16.7	25.0	7.7
	JIU-P AROSANI	34.1	51.2	29.6	13.2	3.4
ANINOASA	ANINOASA	32.1	49.2	26.0	19.2	12.4
	ISCRONI	31.6	47.9	24.9	21.4	15.4
Total	Jiu Valley	36.7	52.5	28.7	21.8	10.0
Total Urban area in Hunedoara county		40.5		33.1	18.36	
Total country - urban		42.9	58.1	37.4	12.8	

Data source: NIS March 18, 2002 census and Recensământul populației și al locuințelor. Rezultate generale. Populație, gospodăria, locuințe, INS, iunie 2003

1% of occupied and unemployed to total population

2% of occupied and unemployed to total working age population (15-64 years old)

3% of occupied population to total population

4% of assisted and unassisted unemployed to (occupied and unemployed) population

5% of assisted unemployed to active population.

Table H.2.6. Occupation category by type of settlement

	Occupation category (adapted from ISCO88)						Total	
	leaders, specialist s	clerks, service workers	qualified mining workers	qualified non-mining workers	non-qualified mining workers	non-qualified non-mining workers	%	Count
Petrosani center	21.4	17.4	16.1	35.6	2.5	7.0	100.0	16816
Petrosani periphery	.5	8.6	32.3	24.2	5.6	28.8	100.0	198
Lupeni	8.8	15.4	38.3	27.1	3.9	6.5	100.0	8967
Petrila center	7.8	14.2	31.2	32.9	6.2	7.6	100.0	7873
Petrila periphery	3.7	9.5	32.2	37.9	9.7	7.0	100.0	515
Uricani center	5.7	14.5	34.2	27.5	8.2	9.8	100.0	2938
Uricani periphery	7.1	13.8	18.0	38.9	3.2	19.1	100.0	283
Vulcan center	8.5	15.3	28.4	33.8	6.2	7.9	100.0	10018
Vulcan periphery	12.6	9.4	19.8	48.6	3.1	6.5	100.0	650
Aninoasa center	3.4	13.9	37.1	24.8	8.6	12.3	100.0	945
Aninoasa periphery	10.1	16.5	26.4	31.0	4.6	11.4	100.0	587
Total	12.5	15.6	26.8	32.7	4.7	7.6	100.0	49790

Data source: NIS March 18, 2002 census

Table H.2.7. Age structure of Jiu Valley and national-urban populations

Age group	Jiu Valley			National-urban level		
	males	females	total	males	females	total
0-14	20.6	21.6	21.1	17.0	15.0	15.9
15-24	15.4	16.4	15.9	18.2	16.5	17.3
25-49	39.9	41.6	40.7	40.3	40.5	40.4
50-64	14.8	13.5	14.2	15.7	15.9	15.8
65 and over	9.3	7.0	8.2	8.8	12.0	10.5
Total %	100	100	100	100	100	100
N	75101	72634	147735	5493397	5941683	11435080
Mean age of working age population (15-64 years old)*	34.48	35.00	34.74	34.73	34.08	34.39

Data source: NIS March 18, 2002. Own computations. * Estimations from five years interval groups data.

Table H.2.8. Average values of well-being indicators by occupation categories

Occupation*	Index of status RESOURCES***	Monthly hhd income per equivalent adult thousand lei**	Index of possession of rare goods RAREGOOD S***	Index of current life style deprivation ***	Monetary income per person in the last month thousand lei
professionals (2)	15.6	6411.0	73.1	1.1	4993.1
managers (1)	13.3	5353.2	79.2	0.8	5120.9
technicians, trainers (3)	7.0	5004.6	55.0	2.0	4321.8
clerks (4)	6.9	4745.0	64.0	1.7	3480.3
mining workers (71,81)	6.1	7573.5	53.0	1.3	9808.5
non-mining workers (7,8,9)	3.0	5089.1	44.5	2.2	5198.9
service workers (5)	2.1	4527.5	46.8	2.5	2538.3
students	0.2	4388.9	51.0	2.2	1036.7
other occupation	-1.8	2851.7	29.8	3.5	1422.5
unemployed	-4.4	3417.9	29.8	3.4	1526.5
never employed	-7.3	3572.3	24.4	3.3	1268.9
Total	-0.7	4297.9	38.5	2.8	3005.1

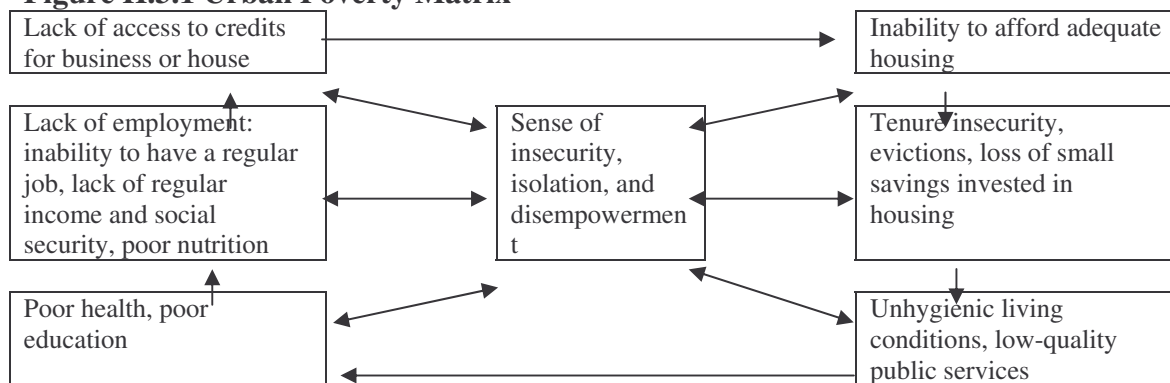
Data source: Jiu Valley household survey, Jiu Valley Association, May 2003. * Values in brackets specify the ISCO98 code of the occupation.

H.3. Poverty Assessment¹¹

A. Methodology for poverty assessment

The World Development Report (2000/ 2001) defines urban poverty in a multi-dimensional manner. Five dimensions are set out for viewing urban poverty: income/consumption, health, education, security, and empowerment.

Figure H.3.1 Urban Poverty Matrix



Source: A Sourcebook for Poverty Reduction Strategies, Volume 2: Macro and Sectoral Issues, Edited by Jeni Klugman, 2001. Urban Poverty: 3-15, 20-22, 39-40.

The ‘urban poverty matrix’ summarizes the key features of poverty in urban context. Multiple deprivations - one dimension being often the cause of or the contributor to another dimension -, as in the figure above, characterizes urban poverty.

Besides poverty we will operate with the concept of insecurity, defined as vulnerability to a decline in well-being, thus as risk of falling into poverty. The shock triggering the decline can occur at the micro (household level), at the meso (community level), and/or at the national or international level (World Development Report 2000/2001). In theory, lack of tenure security is considered the vulnerability specific for urban areas since it represents a key factor that can trigger decline in the well-being.

Theoretically, in urban context, poverty and risk of falling into poverty relate to three distinctive characteristics of the urban life (Moser, Gatehouse and Garcia, 1996): commoditization (reliance on the cash economy), environmental hazard (density of the population in the area and exposure to multiple pollutants), and social fragmentation (lack of community and inter-household mechanisms for social security, relative to those in rural areas). The latter two characteristics are treated in another chapters (environmental assessment, social capital respectively). Here, we deal only with commoditization since in the six cities of the Jiu Valley opportunity for gardening, agriculture on small plots, etc. seems lower than in other urban settings due to the limited agricultural land accessible in the area, which is surrounded by four mountain chains.

¹¹ Unless otherwise specified, all the tables of this annex comes from JVHS.

At a different logical level, the analysis of urban poverty/ development involves questions related to the concentration/ dispersion of poor/rich people in the various zones/ neighborhoods of the city. Literature (Mingione 1996, p.12) shows that in general, the new forms of urban poverty are viewed as critical problems in respect of citizenship systems that are being re-molded in line with changing social conditions. The new poor are those systematically excluded from full citizenship and constitute a serious threat to social cohesion. The problem is not the revolt of the poor (because, by definition, they have no voice or political representation), but rather the weakening of the social bond as a whole in a situation where solidarity and certainties are fading away even for those who are not poor. The aim is, therefore, to describe poverty in diverse urban areas but, even more important, to discuss the impact of the impoverishment as a critical factor with regard to social cohesion in the process of transition to the new order defined by market and democracy.

Cities are highly heterogeneous since there are significant intra-city discrepancies in the economic, social, health, education, and environmental conditions. This rule applies in Jiu Valley too. Consequently, obtaining a correct picture of poverty/development of a city requires “to know the social and physical conditions of different groups and neighborhoods within the city, the forms of deprivations that they suffer, and the numbers and characteristics of these residents” (Klugman¹², 2001).

Consequently, our social assessment will be developed both at the micro level (household/ individual) and meso level (community defined as zone and /or city).

The core indicators that organize the present approach of poverty are consistent with the ESW competitiveness dimensions (Figure 1.1).

¹² *A Sourcebook for Poverty Reduction Strategies*, volume 2, p. 8

Table H.3.1. Core Indicators of Urban Poverty

Poverty dimensions	Intermediate indicators	Impact / outcome indicators
Income	Shares of informal employment Share of household expenditures on housing (plus debts) Access to electricity Coverage of social assistance Access to credits from formal finance organizations	Poverty headcount Poverty gap Female headed households in poverty Ratio of inequality Unemployment rate Housing price/income ratio
Health	% household connected to water / sewerage % household with regular solid waste collection Heating system and share of household expenditures on heating Dwelling crowding (housing floor space per person) Access to primary health services Share of household expenditures on health care Share of household expenditures on food	Infant and under-5 mortality Morbidity and mortality rates from public health/ environment related diseases
Education	Primary and secondary school enrollment rates	Child labor Street children School completion rates Gender gap in education attainment
Security - tenure - personal	Population in unauthorized housing Population living in deprived zones Access to police and legal system protections	% of households with secure tenure murder rates and rates of other crimes such as domestic violence, child abuse, robbery, etc.
Empowerment	Extent of public consultation in local government budget decisions Participation of residents in political or community organizations Access to telephones and internet	Public access to information about local government decisions and to public services. Satisfaction with city services

Source: The entire list of indicators in *A Sourcebook for Poverty Reduction Strategies*, Volume 2: *Macro and Sectoral Issues*, p. 13, Edited by Jeni Klugman, 2001. For more indicators see www.urbanobservatory.org or urbanhelp@worldbank.org.

The analysis is mainly based on data provided by the Jiu Valley Household Survey (JVHS) (see annex on survey methodology). The quantitative analysis is completed with data from interviews and ad-hoc group discussions in the poor neighborhoods and interviews with the institutional representatives of the area.

Table H.3.2. Jiu Valley Household Survey dataset

City	Respondents 18+ (unweighted data)		Households (weighted data)		Population (weighted data)	
	Frequency	Percent	Frequency	Percent	Frequency	Percent
Petrosani	553	30.7%	566	31.7%	1556	30.7%
Lupeni	374	20.8%	382	21.3%	1065	21.0%
Petrila	320	17.8%	299	16.7%	872	17.2%
Uricani	110	6.1%	116	6.5%	360	7.1%
Vulcan	364	20.2%	361	20.2%	1047	20.6%
Aninoasa	79	4.4%	64	3.6%	177	3.5%
Total Jiu Valley	1800	100%	1788	100%	5076	100%

As benchmark we will use the nationwide urban average (all urban areas combined). In the limit of available data we use as benchmark the national urban areas of comparable size (less than 50 thousand inhabitants).

The major sources of information at the nationwide urban level are: 1. For household level - Panduru, Porojan and Molnar (eds.) “Living Conditions of Romanian Population”, National Institute for Statistics and Phare, Bucharest 2001, based on Living Conditions Survey (ACOV) and NIS and UNICEF report on “Social Trends”, Bucharest 2001, based on data from Household Budget Survey; 2. For individual level – Open Society Foundation Public Opinion Barometer (OSF POB) dataset April 2003, authors’ computation. The third major source of nationwide level information is the Romania Poverty Assessment, World Bank 2002 (Draft).

There is no correct or scientific method of estimating poverty. Measuring poverty is an inherently subjective task and each method has its limits, advantages and disadvantages. Empirical analyses of poverty generally focus on measuring income or consumption poverty, and therefore provide only a partial picture.

Poverty is usually measured using a representative household survey that assesses the welfare of the population. Welfare indicators are constructed using either consumption—measured by household expenditures on food and non-food items—or household income. Consumption data are generally considered more reliable; there are substantial problems with measuring income, including the difficulty of capturing in-kind income. Individuals may also be reluctant to report income from informal activities for fear of having to pay taxes. The disincentives to reporting consumption are less problematic, but methodological questions also remain here, including what to include as consumption and the difficulties that respondents have in recalling household expenditures.

B. Income poverty

Table H.3.3. Distribution of income by decile

	Decile 1 (D1)	Decile 2 (D2)	Decile 3 (D3)	Decile 4 (D4)	Decile 5 (D5)	Decile 6 (D6)	Decile 7 (D7)	Decile 8 (D8)	Decile 9 (D9)	Decile 10 (D10)	Total Sum of incom es
Share of the decile in the total sum	1.7	3.2	4.7	6.1	7.6	9.7	11.4	13.7	15.9	25.9	100.0
Cumulati ve%age		5.0	9.6	15.8	23.3	33.0	44.5	58.1	74.1	100.0	

Table H.3.4. Ratio of inequality against food poverty

	Q1	Q2	Q3	Q4	Q5			
Food Severe povert y line Poverty line	100	162	219	352	562	839	1115	1822
							D9	D10

Note: Average income per adult equivalent of each income group as share of average income per adult equivalent of households in food poverty.

Table H.3.5. Ratio of inequality against the first decile

D1	D2	D3	D4	D5	D6	D7	D8	D9	D10
100	176	250	320	406	503	613	756	906	1479

Note: Average income per adult equivalent of each decile as share of average income per adult equivalent of households Decile 1 (D1).

Table H.3.6. Median income per adult equivalent by city and city specific poverty lines

	Petrosani	Lupeni	Petrila	Uricani	Vulcan	Aninoasa	Total Jiu Valley
Median income per adult equivalent (ROL)	2852857	3624380	3962179	3006984	4005855	2574577	3418957
Of which:							
40%	1141143	1449752	1584872	1202794	1602342	1029831	1367583
50%	1426429	1812190	1981090	1503492	2002928	1287289	1709479
60%	1711715	2174628	2377307	1804191	2403513	1544746	2051374

Table H.3.7. Dimension of poverty in Jiu Valley compared to nationwide urban areas

	Below food line		Below severe poverty line		Below poverty line		Valid N
	Mean	Std.Err.	Mean	Std.Err.	Mean	Std.Err.	
Total Jiu Valley	6.31%	0.34%	10.38%	0.43%	19.43%	0.56%	5053
Petrosani	6.65%	0.63%	10.62%	0.78%	19.48%	1.01%	1544
Lupeni	5.25%	0.68%	9.02%	0.88%	21.60%	1.26%	1063
Petrila	2.69%	0.55%	6.01%	0.81%	14.54%	1.20%	870
Uricani	12.39%	1.74%	18.68%	2.06%	25.02%	2.29%	360
Vulcan	6.13%	0.74%	10.09%	0.93%	17.13%	1.17%	1040
Aninoasa	16.09%	2.77%	22.72%	3.16%	32.10%	3.52%	177
National Urban							
5,000-9,999 inh	8.54%	1.00%	16.76%	1.46%	40.12%	2.07%	
10,000-49,999 inh.	3.98%	0.86%	8.56%	1.40%	26.90%	2.35%	
Total urban areas	2.68%	0.41%	5.38%	0.55%	17.63%	1.05%	

Table H.3.8. Permanent out-migration from Jiu Valley 1997 – 2001 by city

Permanent migrants	out-	Petrosani	Lupeni	Petrila	Uricani	Vulcan	Aninoasa	Total Jiu Valley
1997 Number		1516	1245	1411	976	1736	284	7168
Out- migrants per 1000 inh		29.0‰	37.8‰	46.7‰	74.6‰	49.2‰	45.7‰	42.2‰
1998 Number		1549	800	1101	642	1386	196	5674
Out- migrants per 1000 inh		30.3‰	25.0‰	37.9‰	51.9‰	41.0‰	32.0‰	34.1‰
1999 Number		1096	711	798	393	916	142	4056
Out- migrants per 1000 inh		21.8‰	22.5‰	27.8‰	32.3‰	27.6‰	23.2‰	24.8‰
2000 Number		866	583	560	287	679	122	3097
Out- migrants per 1000 inh		17.3‰	18.7‰	19.8‰	23.8‰	20.7‰	19.8‰	19.2‰
2001 Number		763	509	570	267	556	110	2775
Out- migrants per 1000 inh		15.2‰	16.5‰	20.2‰	22.4‰	17.0‰	17.9‰	17.3‰

Source: Hunedoara County Office for Statistics, 2003, authors' computation.

Note: For comparison, Jiu Valley permanent out-migration per 1,000 inhabitants was 10.2 (Hart Group in association with Vienna Survey Center and CURS SA Bucharest, June 2002).

Table H.3.9. Intention to leave the Jiu Valley by income groups

		Q1		Q2	Q3	Q4	Q5		Total Jiu Valley	
Respondents of 18 years or over		Food povert y	Severe Povert y Line	Povert y Line			D9	D10		
Intention to migrate	Yes	31.9%	27.9%	25.4%	28.0%	23.1%	22.6%	15.3 %	16.8 %	23.3%
	No	68.1%	72.1%	74.6%	72.0%	76.9%	77.4%	84.7 %	83.2 %	76.7%
Of those intending to leave the Valley:										
Have a specified plan		65.5%	35.3%	45.2%	59.6%	57.5%	53.9%	48.0 %	62.5 %	55.7%
	• A village	42.9%	29.4%	36.4%	21.6%	14.3%	15.1%	18.5 %	*	21.2%
Where plan to go	• A city	21.4%	*	24.2%	29.5%	36.4%	45.2%	44.4 %	58.6 %	36.0%
	• A foreign country	35.7%	47.1%	39.4%	48.9%	49.4%	39.7%	37.0 %	27.6 %	42.7%
With whom plan to go	• Alone	20.7%	47.1%	37.1%	54.8%	60.0%	60.5%	40.0 %	32.3 %	49.7%
	• Partner	*	*	*	*	6.3%	5.3%	22.6 0.0%	%	7.5%
For how long	• Entire family	69.0%	47.1%	54.3%	38.7%	33.8%	34.2%	60.0 %	45.2 %	42.7%
	• Permanently	62.1%	43.8%	54.3%	60.2%	57.0%	57.7%	64.0 %	67.7 %	58.8%
	• Temporary	37.9%	56.3%	45.7%	39.8%	43.0%	42.3%	36.0 %	32.3 %	41.2%
Valid N		94	61	142	346	355	341	176	190	1705

Notes: Non-response 5.3%; * Cells with less than 5 cases; Bold cells represent significantly larger values, adjusted residuals higher than 2. For comparison, 13% (in 2001) and 14% (in 2002) of population from all mining regions of the country were willing to move (Hart Group in association with Vienna Survey Center and CURS SA Bucharest, June 2002).

C. Subjective poverty

Table H.3.10. Deprived zones identified by local people by city

Deprived zones	Petrosani	Lupeni	Petrla	Uricani	Vulcan	Aninoasa	Total
ALEEA MUNCII					39		39
AVRAM IANCU	39						39
BOSNIA	18						18
MUCURA				29			29
BUJORULUI						34	34
CAP DE LINIE							
LONEA			105				105
CENTRU II						10	10
CENTRU VECHI		23					23
COASTA	11						11
COLONIA DE JOS					60		60
COLONIE	212	11			4		227
CRIVIDIA					7		7
DACIA	13						13
DALLAS			30		116		146
GROAPA DE							
GUNOI					8	8	
MINEI			58				58
MOLDOVA NOUA				33			33
ORASUL NOU				19			19
ORASUL VECHI				89			89
PARANG			18				18
SASA	8						8
SERPARIE	78						78
STADIONULUI		22					22
SUS PE VALE						42	42
ȘTEFAN		36					36
VALEA PLANGERII	237					237	
VASCOZA		12					12
ZONA "ZERO"		30					30
	379	371	211	170	226	94	1451

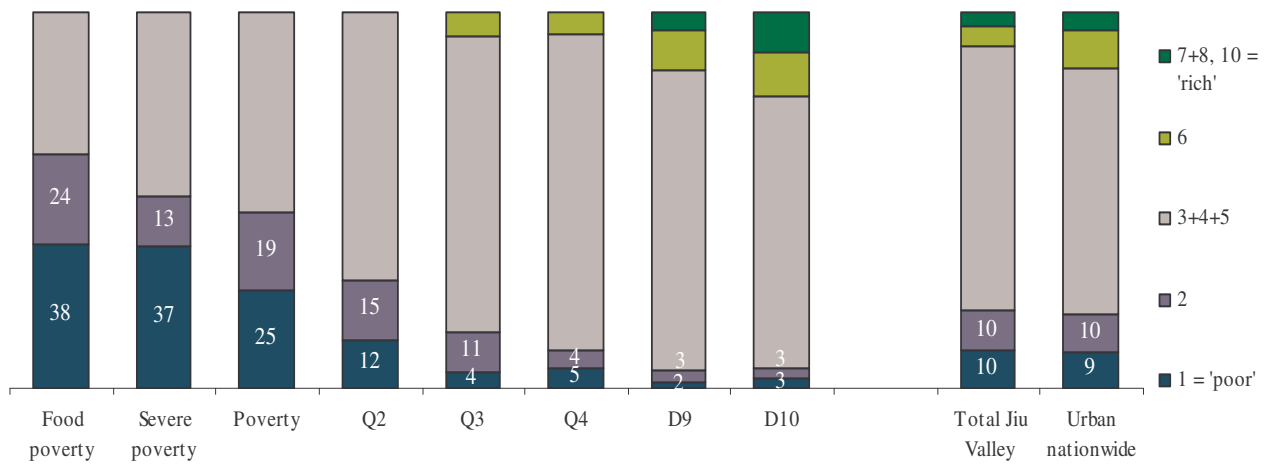
Note: A zone may comprise a street or part of a street (a group of houses or block of flats), a neighborhood or a part of it. For instance, "Colonie" (Work Colony) from Petrosani was entirely mentioned; "Serparie" (The Snake Place) represents a group of block of flats located on Venus and Saturn street and included in neighborhood Aeroport; "Dallas" from Vulcan represents a group of block of flats located on street Traian No. 2, 4, and 6, plus street M. Eminescu and St. O. Iosif entirely; "Orasul Vechi" (Old Town) from Uricani is a line of block of flats on Aleea Jiului No. 1, 3, and 5, Str. Revolutiei No. 1 to 5, Str. 1 Mai No. 18, Str. Plopilor, No.1, Str. Muncii, No. 11A, 13, 17, Aleea Teilor No. 25 and 33, Str. 1 Decembrie, No. 1, 3, 5, 9, and 11, and Str. Progresului, No. 21.

Table H.3.11. Estimation of the household income compared to needs by income groups according to the respondents 18 years and over

Actual incomes of the household are	Q1		Q2	Q3	Q4	Q5		Total Jiu Valley	Urban Nation-wide	
	Food poverty Line	Severe Poverty Line				D9	D10			
:										
- not enough for basic needs	83.5%	74.6%	64.6%	43.5%	21.2%	14.7%	6.0%	4.1%	29.9%	29.4%
- enough for basic needs	14.4%	22.2%	30.6%	45.5%	54.3%	44.0%	42.6%	34.2%	41.7%	42.0%
- enough for a decent life or better	*	*	4.8%	11.0%	24.5%	41.4%	51.4%	61.7%	28.4%	28.6%
Valid N	97	63	147	354	368	348	183	196	1756	

Source: Urban national data provided by the OSF POB, April 2003. Notes: Non-response 2.4%; * Cells with less than 5 cases; Bold cells represent significantly larger values, adjusted residuals higher than 2.

Figure H.3.2. Self-identification as on a scale from 1 ('poor') to 10 ('rich') according to the respondents 18 years and over



Source: Urban national data from the OSF POB, April 2003.

Table H.3.12. Actual standard of living compared to the one in 1989 according to the respondents 18 years and over

In present (2003) the HH standard of living is:	Q1		Q2	Q3	Q4	Q5		Total Jiu Valley	Urban Nation-wide	
	Food poverty	Severe Poverty Line	Povert Line			D9	D10			
- worse than in 1989	77.3	73.8	62.6	70.9	53.3	42.4	30.8	28.4	52.5	50.4
- almost the same	5.2	6.6	15.0	13.7	20.5	23.3	29.7	20.1	18.7	20.3
- better than in 1989	15.5	13.1	21.1	12.2	23.2	31.4	31.4	39.2	24.3	27.9
HH was formed after 1989	2.1	6.6	1.4	3.2	3.0	2.9	8.1	12.4	4.5	1.4
Valid N	97	61	147	344	366	344	172	194	1725	

Source: Urban national data provided by the OSF POB, April 2003.

Notes: Non-response 4.2%; * Cells with less than 5 cases; Bold cells represent significantly larger values, adjusted residuals higher than 2.

Table H.3.13. Respondents that declare that their households do not afford covering various needs by income groups

	Q1			Q2	Q3	Q4	Q5		Total Jiu Valley	Urban National
	Food poverty	Severe Poverty Line	Poverty Line				D9	D10		
Basic needs:										
• daily bread	22.4%	16.1%	8.1%	4.8%	3.0%	*	*	*	4.8%	3.9%
• meat or fish meals once a week	58.8%	48.4%	46.3%	21.2%	14.4%	9.1%	6.0%	3.6%	19.2%	15.8%
• heating	64.6%	69.5%	54.5%	49.3%	33.7%	20.6%	16.1%	14.2%	35.0%	21.8%
• housing related costs	78.4%	63.9%	50.7%	32.9%	19.8%	16.5%	21.9%	12.8%	28.5%	22.3%
• warmy clothes for winter	57.7%	58.3%	45.5%	38.2%	23.4%	13.8%	9.0%	7.2%	26.4%	24.4%
• solid footwears	83.5%	85.0%	74.0%	65.7%	51.8%	38.2%	32.6%	24.0%	51.9%	51.8%
• medicines										
- do not afford	63.9%	72.6%	44.6%	36.2%	22.6%	15.9%	12.6%	10.7%	27.5%	37.0%
- do not need	*	*	*	2.3%	3.2%	2.0%	*	*	2.5%	2.9%
Other needs:										
• regular savings	94.8%	95.1%	90.3%	87.5%	77.3%	67.3%	69.1%	55.4%	76.9%	86.4%
• new furniture										
- do not afford	94.8%	91.9%	89.2%	86.8%	79.5%	71.5%	73.5%	53.1%	77.9%	81.4%
- do not need	*	*	7.4%	7.0%	11.9%	11.1%	10.5%	16.3%	10.1%	9.5%
• holiday outside the city										
- do not afford	93.8%	88.7%	83.9%	83.9%	66.3%	52.7%	43.3%	28.4%	64.3%	73.9%
- do not need	*	8.1%	6.0%	2.3%	3.2%	3.7%	*	*	3.1%	3.6%
• invite guest over dinner/lunch										
- do not afford	82.7%	82.3%	68.9%	61.9%	52.7%	39.5%	33.7%	23.1%	50.8%	57.1%
- do not need	*	*	6.8%	4.8%	7.8%	6.0%	7.3%	6.7%	6.3%	5.2%
• any newspaper daily										
- do not afford	74.2%	67.7%	58.8%	47.6%	38.4%	28.2%	24.7%	15.4%	39.0%	40.8%
- do not need	11.3%	12.9%	18.2%	14.2%	20.0%	17.9%	20.3%	11.3%	16.6%	13.0%
Valid N	98	63	149	355	371	354	184	198	1772	

Source: National data from the OSF POB, April 2003. Notes: Non-response between 2.1 and 3.5%; * Cells with less than 5 cases; Bold cells represent significantly larger values, adjusted residuals higher than 2.

D. Poverty correlates

Table H.3.14. Housing conditions by income groups

	Q1		Q2	Q3	Q4	Q5		Total Jiu Valley	Urban National
	Food poverty	Severe Poverty Line	Poverty Line			D9	D10		
Type of dwelling									
- house	19.1%	16.5%	16.1%	19.1%	14.9%	13.8%	12.5%	9.0%	15.2%
- bungalow	25.0%	16.3%	16.6%	4.6%	7.6%	6.2%	4.3%	5.6%	8.3%
- block of flats comfort I, II	39.3%	45.5%	54.0%	63.9%	67.6%	71.9%	76.0%	77.5%	65.6%
- block of flats comfort III or IV	16.6%	21.7%	13.3%	12.2%	9.9%	8.0%	7.2%	7.9%	10.8%
Ownership									
- own dwelling	63.8%	73.8%	77.6%	90.0%	91.6%	92.2%	86.2%	92.8%	87.3%
- rented dwelling	36.2%	26.2%	22.2%	9.5%	6.6%	6.0%	10.8%	6.7%	11.5%
Year when dwelling was built									
- before 1940	47.9%	44.2%	45.7%	32.0%	30.2%	31.8%	26.6%	32.9%	34.1%
- 1941-1977	35.5%	42.3%	31.0%	40.5%	43.7%	39.4%	41.6%	36.7%	39.3%
- 1978-1989	14.8%	11.7%	22.5%	23.7%	24.1%	25.6%	30.5%	28.6%	24.2%
- 1990 or after	*	*	*	3.7%	2.0%	3.3%	*	*	2.4%
Number of rooms									
1	30.4%	42.3%	33.8%	19.5%	9.4%	15.0%	13.9%	21.6%	19.3%
2	53.5%	41.1%	54.3%	58.1%	63.1%	56.8%	62.1%	57.6%	57.8%
3	14.4%	15.0%	9.9%	17.3%	21.1%	22.0%	20.8%	17.4%	18.4%
4+	*	*	*	5.1%	6.4%	6.2%	3.3%	3.4%	4.5%
Average number of persons per room	1.94	1.86	1.77	1.40	1.36	1.49	1.47	1.28	1.48
Dwelling crowding (housing floor space per person)									
- 20sqm or less	53.4%	42.0%	40.7%	29.5%	16.0%	21.6%	25.6%	28.1%	27.7%
- 21-50 sqm	40.8%	53.3%	53.6%	60.0%	72.6%	65.3%	63.4%	63.3%	62.2%
- 51-100 sqm	5.8%	*	5.7%	10.4%	10.7%	12.8%	10.6%	8.6%	9.8%
Average index of dwelling crowding	10.32	12.13	11.58	15.09	14.44	13.78	13.93	15.35	13.94
Sanitary endowment									
- bathroom, shower	61.9%	68.1%	73.2%	86.1%	89.5%	90.2%	90.9%	90.1%	85.2%
- indoor toilet	62.1%	69.8%	72.1%	87.1%	86.8%	91.9%	90.9%	92.2%	85.3%
- outdoor toilet	30.9%	22.3%	25.6%	11.4%	10.6%	7.5%	8.3%	6.2%	12.5%
Dwelling needs serious renovations	54.3%	52.4%	45.7%	36.2%	35.5%	29.2%	27.7%	26.7%	35.5%
Valid N	101	70	167	374	351	328	175	213	1788

Table H.3.15. Household with durable goods by income groups

	Q1			Q2	Q3	Q4	Q5		Total Jiu Valley
	Food poverty	Severe Poverty Line	Poverty Line				D9	D10	
Durable goods:									
- car	7.0%	4.3%	7.3%	12.8%	29.2%	31.6%	32.0%	36.9%	23.0%
- refrigerator	54.5%	51.4%	69.5%	84.9%	90.0%	94.5%	93.7%	93.8%	85.1%
- color TV set	42.0%	40.0%	64.7%	77.5%	86.5%	89.3%	96.0%	95.8%	80.8%
- freezer	5.0%	10.0%	14.3%	26.0%	41.6%	49.5%	42.4%	54.4%	35.5%
- automatic wash machine	14.9%	14.5%	23.2%	36.5%	52.9%	59.0%	67.4%	69.6%	47.4%
Satisfaction with household goods									
- mean	2.02	2.33	2.39	2.63	2.84	2.88	2.97	3.08	2.74
- Std. Deviation	0.78	0.82	0.75	0.74	0.59	0.65	0.58	0.62	0.73
Valid N	101	70	166	371	350	326	175	207	1766

Table H.3.16. Share of households in debts by creditors and by income groups

	Q1			Q2	Q3	Q4	Q5		Total Jiu Valley
	Food poverty	Severe Poverty Line	Poverty Line				D9	D10	
Share of households in debts									
- to the public utilities	63.5%	48.3%	40.2%	34.1%	21.8%	21.1%	29.9%	16.8%	29.7%
- to relatives, friends, usurers	16.3%	17.2%	17.2%	14.3%	13.9%	16.9%	28.5%	17.5%	16.9%
- to the shop wherefrom buy on credit	26.1%	32.5%	23.7%	14.7%	8.3%	6.5%	8.8%	4.0%	12.2%
Total	66.7%	52.7%	46.6%	41.6%	29.9%	30.5%	41.0%	24.8%	37.6%
Total debts % of total HH monthly income (for HHs in debt)	808	547	370	236	182	112	144	144	278
Valid N	101	70	167	374	351	328	175	213	1778

Notes: * Cells with less than 5 cases; Bold cells represent significantly larger values, adjusted residuals higher than 2.

Table H.3.17. Public utilities by poverty groups

	A. Food poverty	B. Severe poverty	C. Poverty	Non-poor	Table Total	National Urban
Cold running water	84.1%	88.4%	84.6%	95.4%	93.2%	87.7% ¹
Hot water:						
- public system	8.8%	6.6%	10.9%	19.2%	17.6%	68.7%
- boiler or own system	5.7%	10.9%	11.1%	40.8%	35.3%	11.5%
- gas stove	63.7%	63.1%	62.5%	30.9%	36.9%	19.8%
- electrical device	14.7%	13.4%	11.6%	6.0%	7.0%	
- other methods	7.0%	5.9%	4.0%	3.1%	3.3%	
Natural gas provisioning	11.0%	9.5%	9.2%	14.5%	13.6%	72.5%
Connected to electricity	86.6%	90.4%	91.4%	99.0%	97.6%	99.0% ²
Sewerage						
- public system	71.5%	72.2%	73.9%	86.9%	84.5%	83.8% ³
- own system	*	3.8%	5.3%	5.3%	5.2%	3.9%
- in the city river	*	4.8%	3.8%	2.3%	2.5%	
- none	20.2%	19.1%	17.0%	5.5%	7.7%	12.3%
Heating						
- neighborhood heating point on coal	5.5%	5.2%	5.8%	8.2%	7.7%	66.0% ⁴
- public system (thermal plant Paroseni)	12.3%	13.5%	14.7%	27.3%	24.8%	
- own system	0.0%	0.0%	*	1.5%	1.3%	4.0%
- stove on natural gas	*	*	*	1.3%	1.1%	13.6%
- stove on wood/ oil	17.8%	13.8%	13.9%	8.8%	9.7%	15.1%
- stove on coal	34.7%	36.8%	33.7%	16.0%	19.4%	
- electrical device	24.0%	22.4%	23.4%	32.5%	30.7%	0.8%
- none	*	7.8%	7.8%	4.4%	5.2%	0.5%
In the last winter (2002) the dwelling was						
- completely heated	45.1%	46.2%	45.6%	52.9%	51.3%	
- partially heated	37.6%	34.7%	33.9%	36.1%	35.8%	
- not heated	17.3%	19.1%	20.5%	11.0%	12.9%	
Share of heated rooms in the total number of rooms	64.5	63.7	62.7	71.1	69.3	
Valid N	101	171	328	1442	1781	

Source: Nationwide urban data from Panduru et al, NIS, ACOVI 2001.

2002 Census data provide for the urban areas of the country the following values: 1. inside provisioning with water 87.6% of households; 2. connected to electrical system 98.6% of households; 3. connected to the sewerage public system 85.6% of households; 4. connected to the heating public system 67.6% of households.

Table H.3.18. Public utilities and arrears by income groups

	Q1		Q2	Q3	Q4	Q5		Total Jiu Valley	
	Food povert y	Severe Povert y Line	Povert y Line			D9	D10		
% Households connected to:									
Water public system	84.1%	94.5%	81.5%	94.3%	95.4%	97.8%	95.3%	93.1%	93.2%
Hot water public system	8.8%	3.5%	16.3%	22.7%	17.9%	17.9%	20.6%	15.8%	17.6%
Natural gas public system	11.0%	7.2%	8.2%	14.9%	16.4%	14.8%	14.3%	11.5%	13.6%
Electrical public system	86.6%	95.8%	92.9%	98.7%	98.2%	100.0%	100.0%	98.6%	97.6%
Heating public system on coal	5.5%	4.8%	6.2%	8.2%	6.3%	7.2%	8.9%	12.5%	7.7%
Thermal heating public system	12.3%	15.0%	16.9%	24.2%	24.5%	30.3%	29.5%	30.5%	24.8%
Telephone	24.5%	18.6%	28.6%	44.5%	46.4%	49.4%	49.1%	50.2%	43.2%
% Households in debt for the:									
Water public system	29.4%	23.0%	22.3%	14.8%	7.4%	7.2%	12.3%	5.2%	12.4%
Hot water public system	*	*	*	2.7%	2.2%	*	*	2.6%	2.1%
Natural gas public system	0.0%	0.0%	*	*	0.0%	*	0.0%	0.0%	0.5%
Electrical public system	37.5%	23.7%	19.3%	10.6%	6.1%	4.3%	3.3%	*	9.8%
Heating public system	7.3%	*	*	6.9%	4.6%	3.5%	6.2%	5.2%	4.9%
Telephone	*	*	*	*	*	1.8%	*	*	1.4%
Waste	33.0%	28.6%	17.8%	13.7%	8.1%	8.4%	10.3%	2.2%	12.2%
Maintenance (for those living in block of flats)	14.9%	7.4%	8.5%	10.9%	3.5%	5.0%	7.2%	2.9%	7.0%
Dwelling tax	20.4%	14.7%	10.8%	13.1%	11.4%	9.0%	11.2%	4.6%	11.1%
Valid N	101	70	167	374	351	328	175	213	1788
<i>For households in debts:</i>									
Debt to the utility as share of total household income									
Water public system	285.5	127.7	124.6	65.9	47.2	26.8	12.9	7.4	93.2
Hot water public system	*	*	*	43.3	154.4	*	*	10.4	70.7
Natural gas public system									
Electrical public system	357.5	221.3	225.9	96.2	51.3	33.9	36.8	*	173.3
Heating public system	697.3	*	*	161.1	84.9	73.9	71.3	43.6	144.4
Telephone	*	*	*	*	*	4.7	*	*	46.2
Waste	217.5	44.0	47.0	18.9	7.1	6.2	8.4	2.7	49.9
Maintenance (for those living in block of flats)	410.5	403.7	191.4	170.1	52.6	46.3	25.6	29.1	161.6
Dwelling tax	69.8	34.8	43.5	21.1	11.0	5.8	4.7	6.1	22.2

Table H.3.19. Shares of households by income groups and by the distance to various institutions/ services

Institution/ service	Distance	500	Q1			Q2	Q3	Q4	Q5		Total Jiu Valley	Nation -wide Urban
			Food povert y	Severe Povert y Line	Povert y Line				D9	D10		
Postal office	Under	500	32.7%	41.2%	39.2%	44.1%	44.3%	45.7%	54.0%	53.3%	45.3%	
	over 1 km		34.7%	23.5%	20.5%	16.4%	16.1%	16.9%	13.6%	14.2%	17.6%	
Peasan t market	Under	500	35.4%	49.3%	51.0%	55.7%	52.5%	52.5%	64.1%	58.3%	53.8%	30%
	over 1 km		32.3%	20.9%	14.6%	16.2%	16.1%	15.5%	15.0%	14.7%	16.7%	
Public transpo rtation	under	500	54.5%	72.9%	74.9%	77.8%	81.9%	78.8%	83.9%	88.2%	78.8%	
	over 1 km		23.8%	11.4%	6.6%	6.0%	4.6%	5.8%	4.6%	1.9%	6.3%	
Medica l unit	under	500	47.5%	50.7%	58.8%	54.1%	57.1%	54.3%	63.2%	67.3%	57.1%	28.4%
	over 1 km		32.3%	18.8%	14.5%	15.9%	18.2%	18.7%	16.7%	10.1%	17.2%	23.2%
Pharm acy	under	500	56.6%	71.0%	69.9%	66.9%	72.3%	67.8%	77.1%	74.2%	69.9%	52.1%
	over 1 km		23.2%	11.6%	11.4%	11.1%	13.8%	14.6%	10.3%	4.7%	12.2%	15.4%
Primar y school	under	500	51.5%	69.6%	61.7%	70.4%	73.5%	71.5%	77.0%	76.9%	70.7%	44.5%
	over 1 km		25.7%	11.6%	15.0%	6.0%	9.2%	8.0%	6.9%	5.7%	9.2%	17.1%
Kinder garten	under	500	54.0%	69.7%	63.8%	67.9%	73.4%	71.4%	72.3%	76.4%	70.0%	
	over 1 km		27.0%	18.2%	12.3%	8.2%	9.2%	10.2%	6.4%	8.0%	10.4%	
Playgr ound	under	500	42.9%	50.0%	55.7%	57.6%	63.0%	61.5%	60.9%	71.8%	60.1%	33%
	over 1 km		40.7%	25.0%	24.3%	20.1%	16.2%	19.6%	17.9%	13.8%	20.0%	
Bank, ATM	under	500	13.9%	33.3%	27.8%	25.4%	31.9%	25.8%	26.8%	25.5%	26.7%	
	over 1 km		59.5%	43.1%	46.8%	41.5%	36.2%	39.1%	39.4%	27.6%	39.9%	
Police	under	500	26.3%	35.7%	31.5%	32.4%	38.1%	36.4%	37.1%	36.9%	34.9%	
	over 1 km		51.5%	44.3%	39.4%	37.9%	35.1%	36.4%	37.6%	29.1%	37.2%	
Cultura l unit	under	500	20.0%	30.6%	32.8%	32.5%	40.1%	33.2%	41.5%	50.9%	36.3%	15.5%
	over 1 km		52.9%	38.7%	38.0%	39.7%	33.8%	34.7%	28.2%	22.7%	35.2%	4.7%
Restau rant, bar	under	500	62.4%	85.3%	81.7%	79.7%	80.5%	83.0%	85.7%	87.5%	81.4%	58.5%
	over 1 km		23.8%	10.3%	9.1%	6.8%	8.8%	6.2%	7.4%	2.9%	8.0%	
Valid N			100	70	167	373	351	328	176	213	1778	

Source: Nationwide urban data from Panduru et al, NIS, ACOVI 2001.

References

- Donald, Betsy (2001) *Economic Competitiveness and Quality of Life In City Regions: A Review of the Literature*, Williams Research Comp.Inc, Commissioned by: Human Resources Development Canada, February 21
- Gonzales de la Rocha, Mercedes (2001) *From Resources of Poverty to the Poverty of Resources. The erosion of Survival Model*, The Centre for Migration and Development. Working Paper Series. Princeton University. Working paper #01-09a
- Government of Romania, Anti-Poverty and Social Inclusion Commission (2002) *National Anti-Poverty and Social Inclusion Plan Concept*, Bucharest.
- Hart Group in association with Vienna Survey Centre and CURS SA Bucharest (2002) *Second Annual Social Impact Monitoring Report on the year 2001*, Volume 1.
- Ianos, Ioan (1998) "The influence of economic and regional policies on migration in Romania", in *Romania: Migration, Socio-economic Transformation and Perspectives of Regional Development*, edited by Wilfried Heller, Sudosteuropa-Gesellschaft, Munchen.
- Institutul National de Statistica INS (2002) *Coordonate ale nivelului de trai in România. Veniturile si consumul populatiei in anul 2001*, Bucuresti
- Klugman J. (ed.) (2001) *A Sourcebook for Poverty Reduction Strategies*, Volume 2: *Macro and Sectoral Issues*, chapter on "Urban Poverty".
- Mingione, E. (1996) 'Urban Poverty in the Advanced Industrial World: Concepts, Analysis, and Debates', în E.Mingione (ed.) *Urban Poverty and The Underclass*, Blackwell.
- National Institute for Statistics (2002) *Labor Force Survey (AMIGO) Year 2001*, Bucharest.
- National Institute for Statistics and UNICEF (2001) *Social Trends*, Extreme Group, Bucharest.
- Panduru F., Porojan D., and Molnar M. (eds.) (2001) *Living Conditions of the Romanian Population*, NIS and PHARE, Bucharest.
- Porter, Michael (2000) *The Microeconomic Foundations of Competitiveness and the Role of Clusters*, Mississippi, May
- Porter, Michael *Building Competitive Advantage: Lessons From Other Countries*, <http://www.worldbank.org/wbi/mdf/mdf1/advantge.htm>
- Sandu, Dumitru (coord), *The villages of Romania: development, poverty and social capital. Updating targeting for RSDF*, World Bank, Bucuresti, 1999.
- Stanculescu M. and Berevoescu I. (2003) "Romania: National Context Report" in *HWF Research Report #3. HWF Survey Report by Countries*, edited by Claire Wallace, Household, Work and Flexibility Research Consortium, Vienna.
- Stanculescu M. and Berevoescu I. (eds.) (2003) *Extreme Poverty and Social Exclusion in Romania*, World Bank Report, Forthcoming to Nemira Publishing House, Bucharest.
- Stanculescu M. and Ilie S. (2001) *Informal Sector in Romania*, UNDP and RIQL, Bucharest.

Trebici, Vladimir (1986) *Demografia teritoriala a Romaniei*, Bucuresti: Ed. Academiei.

Whealan, C.T., Layette, R., Maitre, B., Nolan, B. (2001) *Persistent Income Poverty and Deprivation in the European Union: An Analysis of the First Three Waves of The European Community Household Panel Survey*, EPAG Paper no 17, April

World Bank (2002) *Romania Poverty Assessment* (Draft version).